

For Research Use Only

MED30 Monoclonal antibody, PBS Only



Catalog Number: 67038-1-PBS

Featured Product

Basic Information

Catalog Number:

67038-1-PBS

Size:

100ug, Concentration: 1 mg/ml by Nanodrop;

Source:

Mouse

Isotype:

IgG2a

Immunogen Catalog Number:

AG10235

GenBank Accession Number:

BC008226

GeneID (NCBI):

90390

UNIPROT ID:

Q96HR3

Full Name:

mediator complex subunit 30

Calculated MW:

178 aa, 20 kDa

Observed MW:

20-25 kDa

Purification Method:

Protein A purification

CloneNo.:

1D7C4

Applications

Tested Applications:

WB, Indirect ELISA

Species Specificity:

Human, rat, pig

Background Information

MED30, also named as THRAP6 and TRAP25, is a component of the Mediator complex. MED30 has two isoforms with MW 16-20 kDa and 20-25 kDa.

Storage

Storage:

Store at -80°C.

Storage Buffer:

PBS Only

For technical support and original validation data for this product please contact:

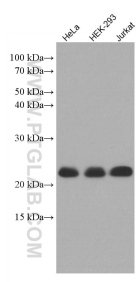
T: 1 (888) 4PTGLAB (1-888-478-4522) (toll free in USA), or 1(312) 455-8498 (outside USA)

E: proteintech@ptglab.com

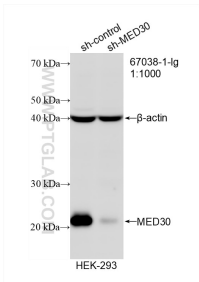
W: ptglab.com

This product is exclusively available under Proteintech Group brand and is not available to purchase from any other manufacturer.

Selected Validation Data



Various lysates were subjected to SDS PAGE followed by western blot with 67038-1-Ig (MED30 antibody) at dilution of 1:3000 incubated at room temperature for 1.5 hours. This data was developed using the same antibody clone with 67038-1-PBS in a different storage buffer formulation.



WB result of MED30 antibody (67038-1-Ig; 1:1000; incubated at room temperature for 1.5 hours) with sh-Control and sh-MED30 transfected HEK-293 cells. This data was developed using the same antibody clone with 67038-1-PBS in a different storage buffer formulation.