

For Research Use Only

MED30 Monoclonal antibody, PBS Only (Capture)

Catalog Number: 67038-2-PBS



Basic Information

Catalog Number: 67038-2-PBS	GenBank Accession Number: BC008226	Purification Method: Protein G purification
Size: 100ug , Concentration: 1 mg/ml by Nanodrop;	GeneID (NCBI): 90390	CloneNo.: 3E4A7
Source: Mouse	UNIPROT ID: Q96HR3	
Isotype: IgG1	Full Name: mediator complex subunit 30	
Immunogen Catalog Number: AG10235	Calculated MW: 178 aa, 20 kDa	

Applications

Tested Applications:
Cytometric bead array, Sandwich ELISA, Indirect ELISA

Species Specificity:
human

Product Information

67038-2-PBS targets MED30 as part of a matched antibody pair:

MP51523-1: 67038-2-PBS capture and 67038-1-PBS detection (validated in Cytometric bead array)

MP51523-2: 67038-2-PBS capture and 67038-3-PBS detection (validated in Cytometric bead array, Sandwich ELISA)

Unconjugated mouse monoclonal antibody pair in PBS only (BSA and azide free) storage buffer at a concentration of 1 mg/mL, ready for conjugation.

This conjugation ready format makes antibodies ideal for use in many applications including: ELISAs, multiplex assays requiring matched pairs, mass cytometry, and multiplex imaging applications. Antibody use should be optimized by the end user for each application and assay.

Storage

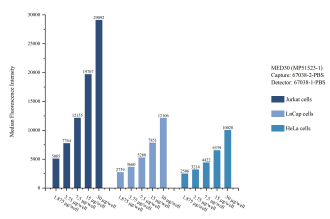
Storage:
Store at -80°C.

Storage Buffer:
PBS only, pH7.3

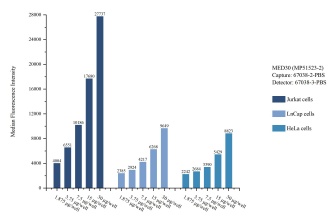
For technical support and original validation data for this product please contact:
T: 1 (888) 4PTGLAB (1-888-478-4522) (toll free in USA), or 1(312) 455-8498 (outside USA)
E: proteintech@ptglab.com
W: ptglab.com

This product is exclusively available under Proteintech Group brand and is not available to purchase from any other manufacturer.

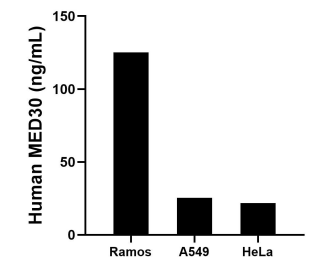
Selected Validation Data



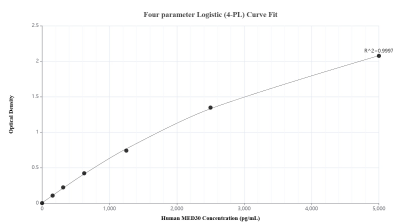
Cytometric bead array sample test of MP51523-1, MED30 Monoclonal Matched Antibody Pair, PBS Only. Capture antibody: 67038-2-PBS. Detection antibody: 67038-1-PBS.



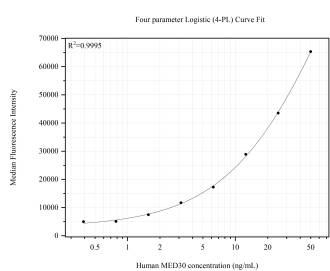
Cytometric bead array sample test of MP51523-2, MED30 Monoclonal Matched Antibody Pair, PBS Only. Capture antibody: 67038-2-PBS. Detection antibody: 67038-3-PBS.



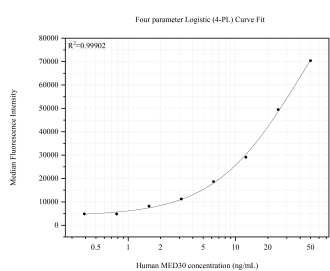
The mean MED30 concentration was determined to be 125.2 ng/mL in Ramos cell extract based on a 2.3 mg/mL extract load, 25.5 ng/mL in A549 cell extract based on a 1.2 mg/mL extract load and 21.9 ng/mL in HeLa cell extract based on a 1.2 mg/mL extract load.



Sandwich ELISA standard curve of MP51523-2, Human MED30 Monoclonal Matched Antibody Pair - PBS only. 67038-2-PBS was coated to a plate as the capture antibody and incubated with serial dilutions of standard Ag10235. 67038-3-PBS was HRP conjugated as the detection antibody. Range: 156-5000 pg/mL.



Cytometric bead array standard curve of MP51523-1, MED30 Monoclonal Matched Antibody Pair, PBS Only. Capture antibody: 67038-2-PBS. Detection antibody: 67038-1-PBS. Standard:Ag10235. Range: 0.391-50 ng/mL.



Cytometric bead array standard curve of MP51523-2, MED30 Monoclonal Matched Antibody Pair, PBS Only. Capture antibody: 67038-2-PBS. Detection antibody: 67038-3-PBS. Standard:Ag10235. Range: 0.391-50 ng/mL.