

For Research Use Only

# MED30 Monoclonal antibody, PBS Only (Detector)

Catalog Number: 67038-3-PBS



## Basic Information

<b>Catalog Number:</b> 67038-3-PBS	<b>GenBank Accession Number:</b> BC008226	<b>Purification Method:</b> Protein A Magarose purification
<b>Size:</b> 100ug , Concentration: 1 mg/ml by Nanodrop;	<b>GeneID (NCBI):</b> 90390	<b>CloneNo.:</b> 2C12C6
<b>Source:</b> Mouse	<b>UNIPROT ID:</b> Q96HR3	
<b>Isotype:</b> IgG2a	<b>Full Name:</b> mediator complex subunit 30	
<b>Immunogen Catalog Number:</b> AG10235	<b>Calculated MW:</b> 178 aa, 20 kDa	

## Applications

**Tested Applications:**  
Sandwich ELISA, Indirect ELISA

**Species Specificity:**  
human

## Product Information

67038-3-PBS targets MED30 as part of a matched antibody pair:

MP51523-2: 67038-2-PBS capture and 67038-3-PBS detection (validated in Cytometric bead array, Sandwich ELISA)

Unconjugated mouse monoclonal antibody pair in PBS only (BSA and azide free) storage buffer at a concentration of 1 mg/mL, ready for conjugation.

This conjugation ready format makes antibodies ideal for use in many applications including: ELISAs, multiplex assays requiring matched pairs, mass cytometry, and multiplex imaging applications. Antibody use should be optimized by the end user for each application and assay.

## Storage

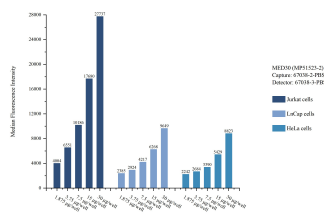
**Storage:**  
Store at -80°C.

**Storage Buffer:**  
PBS only, pH7.3

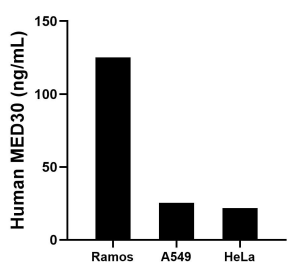
For technical support and original validation data for this product please contact:  
T: 1 (888) 4PTGLAB (1-888-478-4522) (toll free in USA), or 1(312) 455-8498 (outside USA)  
E: [proteintech@ptglab.com](mailto:proteintech@ptglab.com)  
W: [ptglab.com](http://ptglab.com)

This product is exclusively available under Proteintech Group brand and is not available to purchase from any other manufacturer.

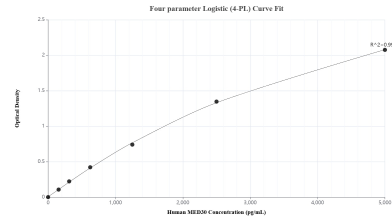
Selected Validation Data



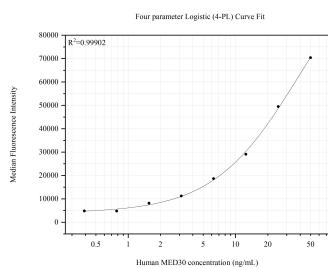
Cytometric bead array sample test of MP51523-2, MED30 Monoclonal Matched Antibody Pair, PBS Only. Capture antibody: 67038-2-PBS. Detection antibody: 67038-3-PBS.



The mean MED30 concentration was determined to be 125.2 ng/mL in Ramos cell extract based on a 2.3 mg/mL extract load, 25.5 ng/mL in A549 cell extract based on a 1.2 mg/mL extract load and 21.9 ng/mL in HeLa cell extract based on a 1.2 mg/mL extract load.



Sandwich ELISA standard curve of MP51523-2, Human MED30 Monoclonal Matched Antibody Pair - PBS only. 67038-2-PBS was coated to a plate as the capture antibody and incubated with serial dilutions of standard Ag10235. 67038-3-PBS was HRP conjugated as the detection antibody. Range: 156-5000 pg/mL



Cytometric bead array standard curve of MP51523-2, MED30 Monoclonal Matched Antibody Pair, PBS Only. Capture antibody: 67038-2-PBS. Detection antibody: 67038-3-PBS. Standard:Ag10235. Range: 0.391-50 ng/mL