

DNASE1L3 Monoclonal antibody, PBS Only

Catalog Number: 67041-1-PBS

Basic Information

Catalog Number: 67041-1-PBS	GenBank Accession Number: BC015831	Purification Method: Protein A purification
Size: 100ug , Concentration: 1 mg/ml by Nanodrop;	GeneID (NCBI): 1776	CloneNo.: 1A4D4
Source: Mouse	UNIPROT ID: Q13609	
Isotype: IgG2a	Full Name: deoxyribonuclease I-like 3	
Immunogen Catalog Number: AG28187	Calculated MW: 305 aa, 36 kDa	
	Observed MW: 33-38 kDa	

Applications

Tested Applications:
WB, IHC, ELISA

Species Specificity:
Human, mouse

Background Information

Deoxyribonuclease 1-like 3 (DNASE1L3, DNase gamma, DNase Y, LS-DNase) is member of a DNASE1 protein family that is identified by similar biochemical properties such as Ca²⁺/Mg²⁺- dependency and an optimal pH of about 7.0 as well as by a high similarity in their nucleic acid and amino acid sequences (PMID:157967140). It is an endonuclease and cleaves double-stranded DNA (and single-stranded DNA) producing 3'-OH/5'-P ends, which is Ca²⁺/Mg²⁺-dependent and inhibited by Zn²⁺, but not by monomeric actin (PMID:9665719). In addition, it translocates from the endoplasmic reticulum to the nucleus during apoptosis (PMID: 23229555). DNASE1L3 can be located either in the cytoplasm or in the nucleus.

Storage

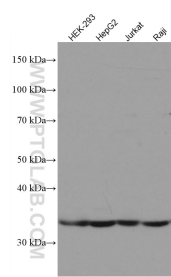
Storage:
Store at -80°C.

Storage Buffer:
PBS only

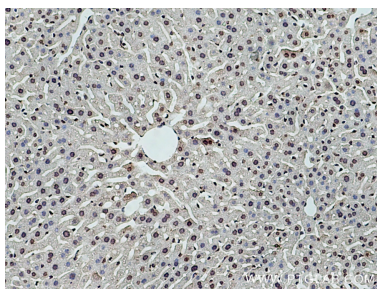
For technical support and original validation data for this product please contact:
T: 1 (888) 4PTGLAB (1-888-478-4522) (toll free in USA), or 1(312) 455-8498 (outside USA)
E: proteintech@ptglab.com
W: ptglab.com

This product is exclusively available under Proteintech Group brand and is not available to purchase from any other manufacturer.

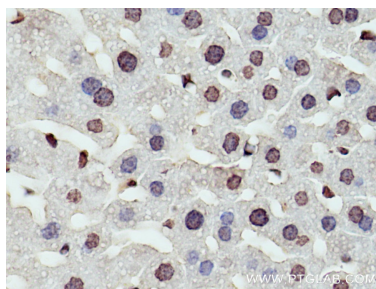
Selected Validation Data



Various lysates were subjected to SDS PAGE followed by western blot with 67041-1-Ig (DNASE1L3 antibody) at dilution of 1:1000 incubated at room temperature for 1.5 hours. This data was developed using the same antibody clone with 67041-1-PBS in a different storage buffer formulation.



Immunohistochemical analysis of paraffin-embedded mouse liver tissue slide using 67041-1-Ig (DNASE1L3 antibody) at dilution of 1:200 (under 10x lens). Heat mediated antigen retrieval with Tris-EDTA buffer (pH 9.0). This data was developed using the same antibody clone with 67041-1-PBS in a different storage buffer formulation.



Immunohistochemical analysis of paraffin-embedded mouse liver tissue slide using 67041-1-Ig (DNASE1L3 antibody) at dilution of 1:200 (under 40x lens). Heat mediated antigen retrieval with Tris-EDTA buffer (pH 9.0). This data was developed using the same antibody clone with 67041-1-PBS in a different storage buffer formulation.