

For Research Use Only

MLX Monoclonal antibody

Catalog Number: 67042-1-Ig



Basic Information

Catalog Number: 67042-1-Ig	GenBank Accession Number: BC010689	Purification Method: Protein G purification
Size: 150ul , Concentration: 2200 µg/ml by Nanodrop and 1000 µg/ml by Bradford method using BSA as the standard;	GeneID (NCBI): 6945	CloneNo.: 2A8D2
Source: Mouse	UNIPROT ID: Q9UH92	Recommended Dilutions: WB 1:1000-1:6000 IHC 1:150-1:600 IF 1:200-1:800
Isotype: IgG1	Full Name: MAX-like protein X	
Immunogen Catalog Number: AG28729	Calculated MW: 298 aa, 33 kDa	
	Observed MW: 33 kDa	

Applications

Tested Applications:

WB, IF, IHC, ELISA

Species Specificity:

Human

Note-IHC: suggested antigen retrieval with TE buffer pH 9.0; (*) Alternatively, antigen retrieval may be performed with citrate buffer pH 6.0

Positive Controls:

WB : HeLa cells, HEK-293 cells, HepG2 cells, Jurkat cells

IHC : human breast cancer tissue, human liver cancer tissue

IF : HepG2 cells,

Storage

Storage:

Store at -20°C. Stable for one year after shipment.

Storage Buffer:

PBS with 0.02% sodium azide and 50% glycerol pH 7.3.

Aliquoting is unnecessary for -20°C storage

*** 20ul sizes contain 0.1% BSA

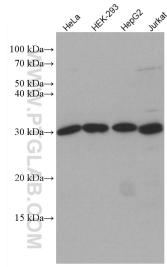
For technical support and original validation data for this product please contact:

T: 1 (888) 4PTGLAB (1-888-478-4522) (toll free in USA), or 1(312) 455-8498 (outside USA)

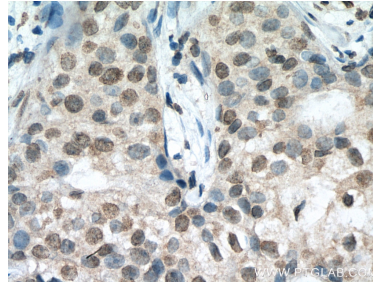
E: proteintech@ptglab.com
W: ptglab.com

This product is exclusively available under Proteintech Group brand and is not available to purchase from any other manufacturer.

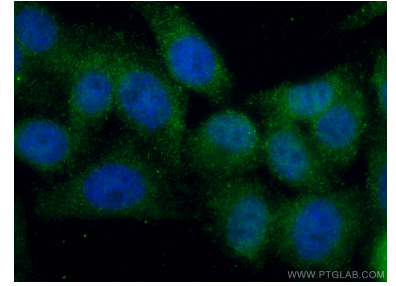
Selected Validation Data



Various lysates were subjected to SDS PAGE followed by western blot with 67042-1-Ig (MLX antibody) at dilution of 1:3000 incubated at room temperature for 1.5 hours.



Immunohistochemical analysis of paraffin-embedded human breast cancer tissue slide using 67042-1-Ig (MLX antibody) at dilution of 1:300 (under 40x lens). Heat mediated antigen retrieval with Tris-EDTA buffer (pH 9.0).



Immunofluorescent analysis of (4% PFA) fixed HepG2 cells using MLX antibody (67042-1-Ig, Clone: 2A8D2) at dilution of 1:400 and CoraLite@488-Conjugated AffiniPure Goat Anti-Mouse IgG(H+L). DAPI (blue).



Immunofluorescent analysis of (4% PFA) fixed HepG2 cells using MLX antibody (67042-1-Ig, Clone: 2A8D2) at dilution of 1:800 and Coralite@488-Conjugated AffiniPure Goat Anti-Mouse IgG(H+L), CL594-phalloidin (red).