

For Research Use Only

CYP27A1 Monoclonal antibody

Catalog Number: 67045-1-Ig

Featured Product

4 Publications



Basic Information

Catalog Number:

67045-1-Ig

Size:

150ul, Concentration: 1000 ug/ml by Bradford method using BSA as the standard;

Source:

Mouse

Isotype:

IgG1

Immunogen Catalog Number:

AG7746

GenBank Accession Number:

BC051851

GeneID (NCBI):

1593

UNIPROT ID:

Q02318

Full Name:

cytochrome P450, family 27, subfamily A, polypeptide 1

Calculated MW:

60 kDa

Observed MW:

54-60 kDa

Purification Method:

Protein G purification

CloneNo.:

3G3F7

Recommended Dilutions:

WB 1:2000-1:10000

IHC 1:250-1:1000

IF-P 1:200-1:800

Applications

Tested Applications:

WB, IHC, IF-P, ELISA

Cited Applications:

WB

Species Specificity:

human, mouse, rat

Cited Species:

human, mouse

Note-IHC: suggested antigen retrieval with TE buffer pH 9.0; (*) Alternatively, antigen retrieval may be performed with citrate buffer pH 6.0

Positive Controls:

WB : Caco-2 cells, HepG2 cells, HT-29 cells, rat liver tissue

IHC : human liver cancer tissue,

IF-P : human liver cancer tissue,

Notable Publications

Author	Pubmed ID	Journal	Application
Jinyan Xie	36604506	Nat Microbiol	WB
Xiaoxi Li	35500802	J Ethnopharmacol	WB
Xiaohong Duan	38847469	J Bone Miner Res	WB

Storage

Storage:

Store at -20°C. Stable for one year after shipment.

Storage Buffer:

PBS with 0.02% sodium azide and 50% glycerol

Aliquoting is unnecessary for -20°C storage

*** 20ul sizes contain 0.1% BSA

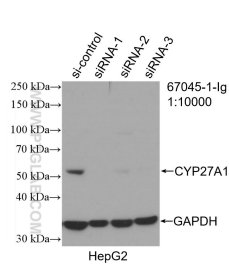
For technical support and original validation data for this product please contact:

T: 1 (888) 4PTGLAB (1-888-478-4522) (toll free in USA), or 1(312) 455-8498 (outside USA)

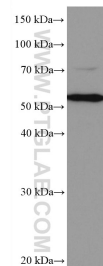
E: proteintech@ptglab.com
W: ptglab.com

This product is exclusively available under Proteintech Group brand and is not available to purchase from any other manufacturer.

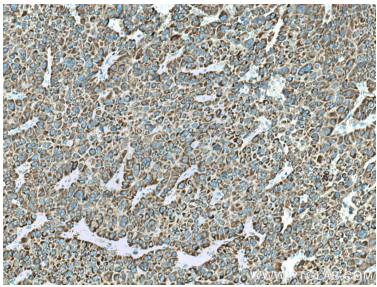
Selected Validation Data



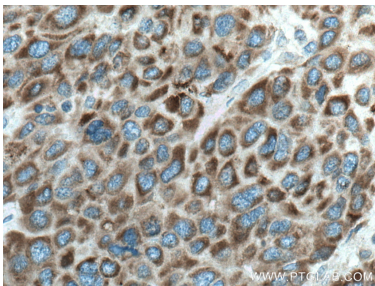
WB result of CYP27A1 antibody (67045-1-Ig; 1:10000; incubated at room temperature for 1.5 hours) with sh-Control and sh-CYP27A1 transfected HepG2 cells.



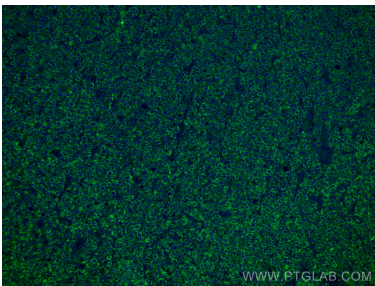
Caco-2 cells were subjected to SDS PAGE followed by western blot with 67045-1-Ig (CYP27A1 antibody) at dilution of 1:5000 incubated at room temperature for 1.5 hours.



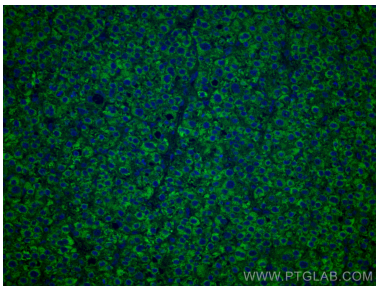
Immunohistochemical analysis of paraffin-embedded human liver cancer tissue slide using 67045-1-Ig (CYP27A1 antibody) at dilution of 1:500 (under 10x lens). Heat mediated antigen retrieval with Tris-EDTA buffer (pH 9.0).



Immunohistochemical analysis of paraffin-embedded human liver cancer tissue slide using 67045-1-Ig (CYP27A1 antibody) at dilution of 1:500 (under 40x lens). Heat mediated antigen retrieval with Tris-EDTA buffer (pH 9.0).



Immunofluorescent analysis of (4% PFA) fixed human liver cancer tissue using CYP27A1 antibody (67045-1-Ig, Clone: 3G3F7) at dilution of 1:400 and CoraLite®488-Conjugated AffiniPure Goat Anti-Mouse IgG(H+L).



Immunofluorescent analysis of (4% PFA) fixed human liver cancer tissue using CYP27A1 antibody (67045-1-Ig, Clone: 3G3F7) at dilution of 1:400 and CoraLite®488-Conjugated AffiniPure Goat Anti-Mouse IgG(H+L).