

For Research Use Only

CYP27A1 Monoclonal antibody

Catalog Number: 67045-1-Ig

Featured Product

3 Publications



Basic Information

Catalog Number: 67045-1-Ig	GenBank Accession Number: BC051851	Purification Method: Protein G purification
Size: 150ul , Concentration: 1000 µg/ml by Bradford method using BSA as the standard;	GeneID (NCBI): 1593	CloneNo.: 3G3F7
Source: Mouse	Full Name: cytochrome P450, family 27, subfamily A, polypeptide 1	Recommended Dilutions: WB 1:2000-1:10000 IHC 1:250-1:1000 IF 1:200-1:800
Isotype: IgG1	Calculated MW: 60 kDa	
Immunogen Catalog Number: AG7746	Observed MW: 54-60 kDa	

Applications

Tested Applications: IF, IHC, WB, ELISA	Positive Controls:
Cited Applications: WB	WB : Caco-2 cells, HepG2 cells, HT-29 cells, rat liver tissue
Species Specificity: Human, Mouse, Rat	IHC : human liver cancer tissue,
Cited Species: human, mouse	IF : human liver cancer tissue,
Note-IHC: suggested antigen retrieval with TE buffer pH 9.0; (*) Alternatively, antigen retrieval may be performed with citrate buffer pH 6.0	

Background Information

Notable Publications

Author	Pubmed ID	Journal	Application
Jinyan Xie	36604506	Nat Microbiol	WB
Xiaoxi Li	35500802	J Ethnopharmacol	WB
Lisha Mou	36936948	Front Immunol	WB

Storage

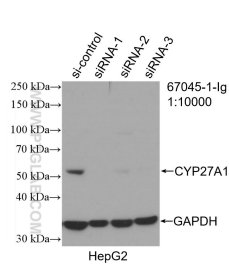
Storage:
Store at -20°C. Stable for one year after shipment.
Storage Buffer:
PBS with 0.02% sodium azide and 50% glycerol pH 7.3.
Aliquoting is unnecessary for -20°C storage

*** 20ul sizes contain 0.1% BSA

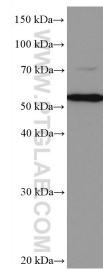
For technical support and original validation data for this product please contact:
T: 1 (888) 4PTGLAB (1-888-478-4522) (toll free in USA), or 1(312) 455-8498 (outside USA)
E: proteintech@ptglab.com
W: ptglab.com

This product is exclusively available under Proteintech Group brand and is not available to purchase from any other manufacturer.

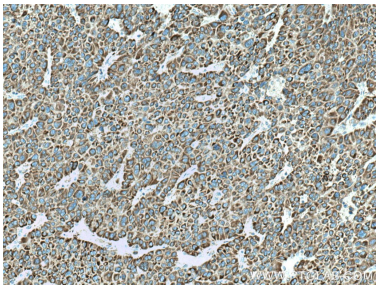
Selected Validation Data



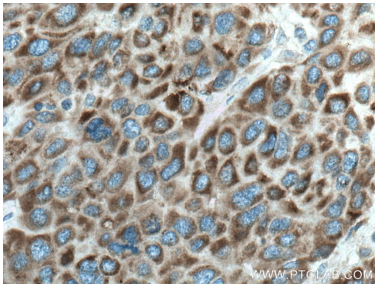
WB result of CYP27A1 antibody (67045-1-Ig; 1:10000; incubated at room temperature for 1.5 hours) with sh-Control and sh-CYP27A1 transfected HepG2 cells.



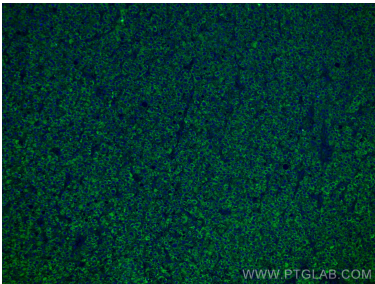
Caco-2 cells were subjected to SDS PAGE followed by western blot with 67045-1-Ig (CYP27A1 antibody) at dilution of 1:5000 incubated at room temperature for 1.5 hours.



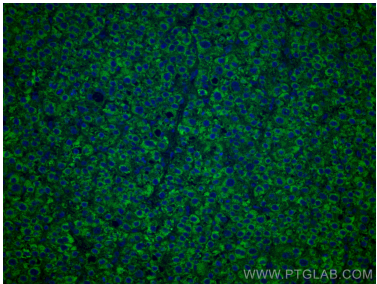
Immunohistochemical analysis of paraffin-embedded human liver cancer tissue slide using 67045-1-Ig (CYP27A1 antibody) at dilution of 1:500 (under 10x lens). Heat mediated antigen retrieval with Tris-EDTA buffer (pH 9.0).



Immunohistochemical analysis of paraffin-embedded human liver cancer tissue slide using 67045-1-Ig (CYP27A1 antibody) at dilution of 1:500 (under 40x lens). Heat mediated antigen retrieval with Tris-EDTA buffer (pH 9.0).



Immunofluorescent analysis of (4% PFA) fixed human liver cancer tissue using CYP27A1 antibody (67045-1-Ig, Clone: 3G3F7) at dilution of 1:400 and CoraLite®488-Conjugated AffiniPure Goat Anti-Mouse IgG(H+L).



Immunofluorescent analysis of (4% PFA) fixed human liver cancer tissue using CYP27A1 antibody (67045-1-Ig, Clone: 3G3F7) at dilution of 1:400 and CoraLite®488-Conjugated AffiniPure Goat Anti-Mouse IgG(H+L).