

For Research Use Only

CYP27A1 Monoclonal antibody, PBS Only

Catalog Number: 67045-1-PBS

Featured Product



Basic Information

Catalog Number:

67045-1-PBS

Size:

100ug , Concentration: 1 mg/ml by Nanodrop;

Source:

Mouse

Isotype:

IgG1

Immunogen Catalog Number:

AG7746

GenBank Accession Number:

BC051851

GeneID (NCBI):

1593

UNIPROT ID:

Q02318

Full Name:

cytochrome P450, family 27, subfamily A, polypeptide 1

Calculated MW:

60 kDa

Observed MW:

54-60 kDa

Purification Method:

Protein A purification

CloneNo.:

3G3F7

Applications

Tested Applications:

WB, IHC, IF-P, ELISA

Species Specificity:

Human, Mouse, Rat

Storage

Storage:

Store at -80°C.

Storage Buffer:

PBS only

For technical support and original validation data for this product please contact:

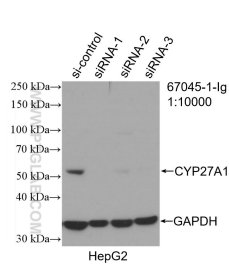
T: 1 (888) 4PTGLAB (1-888-478-4522) (toll free in USA), or 1(312) 455-8498 (outside USA)

E: proteintech@ptglab.com

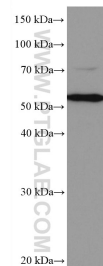
W: ptglab.com

This product is exclusively available under Proteintech Group brand and is not available to purchase from any other manufacturer.

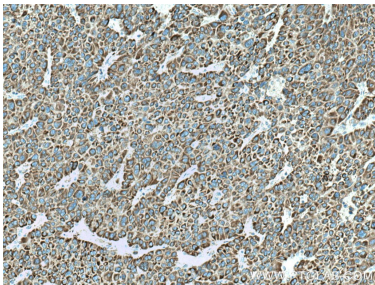
Selected Validation Data



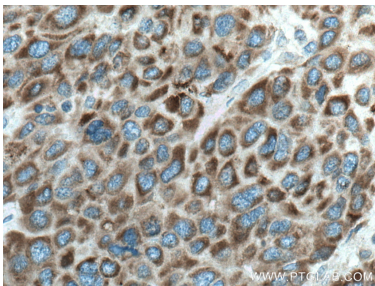
WB result of CYP27A1 antibody (67045-1-Ig; 1:10000; incubated at room temperature for 1.5 hours) with sh-Control and sh-CYP27A1 transfected HepG2 cells. This data was developed using the same antibody clone with 67045-1-PBS in a different storage buffer formulation.



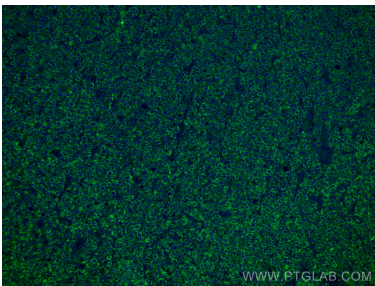
Caco-2 cells were subjected to SDS PAGE followed by western blot with 67045-1-Ig (CYP27A1 antibody) at dilution of 1:5000 incubated at room temperature for 1.5 hours. This data was developed using the same antibody clone with 67045-1-PBS in a different storage buffer formulation.



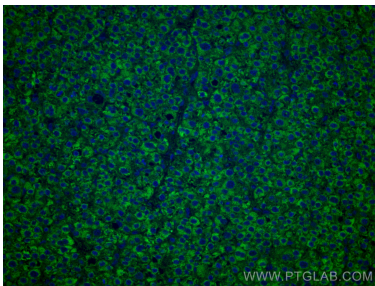
Immunohistochemical analysis of paraffin-embedded human liver cancer tissue slide using 67045-1-Ig (CYP27A1 antibody) at dilution of 1:500 (under 10x lens). Heat mediated antigen retrieval with Tris-EDTA buffer (pH 9.0). This data was developed using the same antibody clone with 67045-1-PBS in a different storage buffer formulation.



Immunohistochemical analysis of paraffin-embedded human liver cancer tissue slide using 67045-1-Ig (CYP27A1 antibody) at dilution of 1:500 (under 40x lens). Heat mediated antigen retrieval with Tris-EDTA buffer (pH 9.0). This data was developed using the same antibody clone with 67045-1-PBS in a different storage buffer formulation.



Immunofluorescent analysis of (4% PFA) fixed human liver cancer tissue using CYP27A1 antibody (67045-1-Ig, Clone: 3G3F7) at dilution of 1:400 and CoraLite®488-Conjugated AffiniPure Goat Anti-Mouse IgG(H+L). This data was developed using the same antibody clone with 67045-1-PBS in a different storage buffer formulation.



Immunofluorescent analysis of (4% PFA) fixed human liver cancer tissue using CYP27A1 antibody (67045-1-Ig, Clone: 3G3F7) at dilution of 1:400 and CoraLite®488-Conjugated AffiniPure Goat Anti-Mouse IgG(H+L). This data was developed using the same antibody clone with 67045-1-PBS in a different storage buffer formulation.