

For Research Use Only

Cyclin D2 Monoclonal antibody

Catalog Number: 67048-1-Ig **6 Publications**



Basic Information

Catalog Number: 67048-1-Ig	GenBank Accession Number: BC010958	Purification Method: Protein A purification
Size: 150ul , Concentration: 2300 ug/ml by 894 Nanodrop and 1000 ug/ml by Bradford method using BSA as the standard;	GeneID (NCBI): P30279	CloneNo.: 1A12A8
Source: Mouse	UNIPROT ID: P30279	Recommended Dilutions: WB 1:1000-1:5000
Isotype: IgG2a	Full Name: cyclin D2	
Immunogen Catalog Number: AG25190	Calculated MW: 32 kDa	
	Observed MW: 30 kDa	

Applications

Tested Applications: WB, ELISA	Positive Controls: WB : HEK-293 cells, NIH/3T3 cells, U2OS cells, MCF-7 cells, Caco-2 cells
Cited Applications: WB	
Species Specificity: Human, mouse	
Cited Species: human, mouse	

Background Information

CCND2 belongs to the highly conserved cyclin family, whose members are characterized by a dramatic periodicity in protein abundance through the cell cycle. Cyclins function as regulators of CDK kinases. CCND2 forms a complex with and functions as a regulatory subunit of CDK4 or CDK6, whose activity is required for cell cycle G1/S transition. CCND2 has been shown to interact with and be involved in the phosphorylation of tumor suppressor protein Rb. High level expression of CCND2 was observed in ovarian and testicular tumors.

Notable Publications

Author	Pubmed ID	Journal	Application
Shuaishuai Zhuo	33993193	Cell Death Dis	WB
Pan Jiang	35968334	Am J Cancer Res	WB
Xiang Fei	39235611	Cancer Chemother Pharmacol	WB

Storage

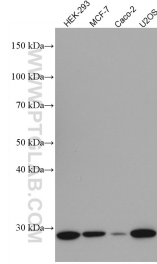
Storage:
Store at -20°C.
Storage Buffer:
PBS with 0.02% sodium azide and 50% glycerol pH 7.3.
Aliquoting is unnecessary for -20°C storage

*** 20ul sizes contain 0.1% BSA

For technical support and original validation data for this product please contact:
T: 1 (888) 4PTGLAB (1-888-478-4522) (toll free in USA), or 1(312) 455-8498 (outside USA)
E: proteintech@ptglab.com
W: ptglab.com

This product is exclusively available under Proteintech Group brand and is not available to purchase from any other manufacturer.

Selected Validation Data



Various lysates were subjected to SDS PAGE followed by western blot with 67048-1-Ig (CCND2 antibody) at dilution of 1:2500 incubated at room temperature for 1.5 hours.