

For Research Use Only

MCM5 Monoclonal antibody

Catalog Number: 67049-1-Ig **2 Publications**



Basic Information

Catalog Number: 67049-1-Ig	GenBank Accession Number: BC000142	Purification Method: Protein G purification
Size: 150ul , Concentration: 2400 ug/ml by Nanodrop and 1000 ug/ml by Bradford method using BSA as the standard;	GeneID (NCBI): 4174	CloneNo.: 3B7F8
Source: Mouse	UNIPROT ID: P33992	Recommended Dilutions: WB 1:5000-1:20000 IF/ICC 1:50-1:500
Isotype: IgG1	Full Name: minichromosome maintenance complex component 5	
Immunogen Catalog Number: AG28704	Calculated MW: 82 kDa	
	Observed MW: 82-88 kDa	

Applications

Tested Applications: WB, IF/ICC, ELISA	Positive Controls:
Cited Applications: WB, IF	WB : Jurkat cells, A375 cells, HeLa cells, ROS1728 cells, NIH/3T3 cells, RAW 264.7 cells
Species Specificity: Human, mouse, rat	IF/ICC : HepG2 cells,
Cited Species: human, mouse	

Background Information

Minichromosome maintenance, *S. Cerevisiae*, homolog of 5(MCM5), one component of the complex of MCM2-7, which is the putative replicative essential for once per cell cycle DNA replication initiation and elongation in eukaryotic cells. The MCM complex form a hexameric ring through the interaction surfaces of two neighboring subunits.

Notable Publications

Author	Pubmed ID	Journal	Application
Minhong Shen	35121987	Nat Cancer	WB
Yingying Jiang	34111560	Mol Ther	IF

Storage

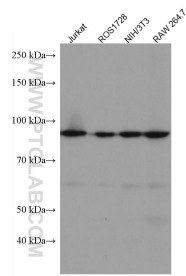
Storage:
Store at -20°C. Stable for one year after shipment.
Storage Buffer:
PBS with 0.02% sodium azide and 50% glycerol pH 7.3.
Aliquoting is unnecessary for -20°C storage

*** 20ul sizes contain 0.1% BSA

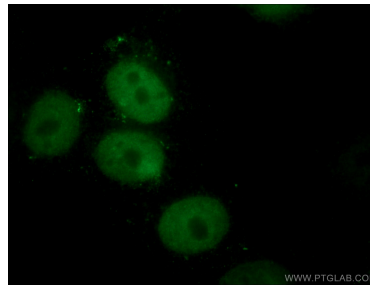
For technical support and original validation data for this product please contact:
T: 1 (888) 4PTGLAB (1-888-478-4522) (toll free in USA), or 1(312) 455-8498 (outside USA)
E: proteintech@ptglab.com
W: ptglab.com

This product is exclusively available under Proteintech Group brand and is not available to purchase from any other manufacturer.

Selected Validation Data



Various lysates were subjected to SDS PAGE followed by western blot with 67049-1-Ig (MCM5 antibody) at dilution of 1:10000 incubated at room temperature for 1.5 hours.



Immunofluorescent analysis of (4% PFA) fixed HepG2 cells using 67049-1-Ig (MCM5 antibody) at dilution of 1:100 and CoraLite488-Conjugated AffiniPure Goat Anti-Mouse IgG(H+L).