

For Research Use Only

# MCM5 Monoclonal antibody, PBS Only



Catalog Number: 67049-1-PBS

## Basic Information

<b>Catalog Number:</b> 67049-1-PBS	<b>GenBank Accession Number:</b> BC000142	<b>Purification Method:</b> Protein G purification
<b>Size:</b> 100ug , Concentration: 1 mg/ml by Nanodrop;	<b>GeneID (NCBI):</b> 4174	<b>CloneNo.:</b> 3B7F8
<b>Source:</b> Mouse	<b>UNIPROT ID:</b> P33992	
<b>Isotype:</b> IgG1	<b>Full Name:</b> minichromosome maintenance complex component 5	
<b>Immunogen Catalog Number:</b> AG28704	<b>Calculated MW:</b> 82 kDa	
	<b>Observed MW:</b> 82-88 kDa	

## Applications

**Tested Applications:**  
WB, IF, Indirect ELISA

**Species Specificity:**  
Human, mouse, rat

## Background Information

Minichromosome maintenance, *S. Cerevisiae*, homolog of 5(MCM5), one component of the complex of MCM2-7, which is the putative replicative essential for once per cell cycle DNA replication initiation and elongation in eukaryotic cells. The MCM complex form a hexameric ring through the interaction surfaces of two neighboring subunits.

## Storage

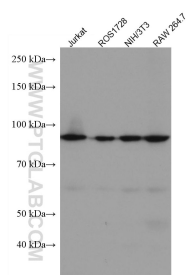
**Storage:**  
Store at -80°C.

**Storage Buffer:**  
PBS Only

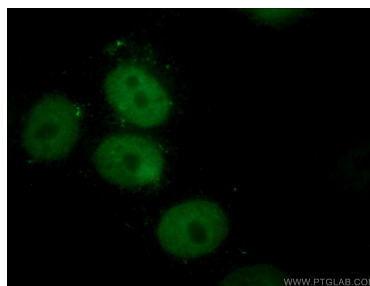
For technical support and original validation data for this product please contact:  
T: 1 (888) 4PTGLAB (1-888-478-4522) (toll free in USA), or 1(312) 455-8498 (outside USA)  
E: [proteintech@ptglab.com](mailto:proteintech@ptglab.com)  
W: [ptglab.com](http://ptglab.com)

This product is exclusively available under Proteintech Group brand and is not available to purchase from any other manufacturer.

## Selected Validation Data



Various lysates were subjected to SDS PAGE followed by western blot with 67049-1-Ig (MCM5 antibody) at dilution of 1:10000 incubated at room temperature for 1.5 hours. This data was developed using the same antibody clone with 67049-1-PBS in a different storage buffer formulation.



Immunofluorescent analysis of (4% PFA) fixed HepG2 cells using 67049-1-Ig (MCM5 antibody) at dilution of 1:100 and CoraLite488-Conjugated AffiniPure Goat Anti-Mouse IgG(H+L). This data was developed using the same antibody clone with 67049-1-PBS in a different storage buffer formulation.