

For Research Use Only

# IL-4R Monoclonal antibody

Catalog Number: 67051-1-Ig



## Basic Information

<b>Catalog Number:</b> 67051-1-Ig	<b>GenBank Accession Number:</b> NM_000418	<b>Purification Method:</b> Protein G purification
<b>Size:</b> 150ul , Concentration: 1900 µg/ml by Nanodrop and 1000 µg/ml by Bradford method using BSA as the standard;	<b>GeneID (NCBI):</b> 3566	<b>CloneNo.:</b> 1E4C11
<b>Source:</b> Mouse	<b>Full Name:</b> interleukin 4 receptor	<b>Recommended Dilutions:</b> WB 1:1000-1:8000
<b>Isotype:</b> IgG1	<b>Calculated MW:</b> 90 kDa	
<b>Immunogen Catalog Number:</b> AG28411	<b>Observed MW:</b> 120 kDa	

## Applications

**Tested Applications:**  
FC, WB, ELISA

**Species Specificity:**  
Human

**Positive Controls:**

**WB:** Jurkat cells, HeLa cells, Raji cells, Ramos cells,  
Daudi cells, HUVEC cells

## Background Information

### Storage

**Storage:**  
Store at -20°C.

**Storage Buffer:**  
PBS with 0.02% sodium azide and 50% glycerol pH 7.3.

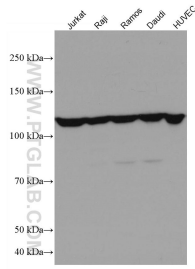
Aliquoting is unnecessary for -20°C storage

**\*\*\* 20ul sizes contain 0.1% BSA**

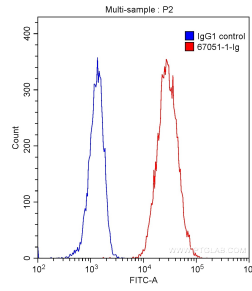
For technical support and original validation data for this product please contact:  
T: 1 (888) 4PTGLAB (1-888-478-4522) (toll free in USA), or 1(312) 455-8498 (outside USA)      E: proteintech@ptglab.com  
W: ptglab.com

**This product is exclusively available under Proteintech Group brand and is not available to purchase from any other manufacturer.**

## Selected Validation Data



Various lysates were subjected to SDS PAGE followed by western blot with 67051-1-Ig (IL4R antibody) at dilution of 1:4000 incubated at room temperature for 1.5 hours.



1X10<sup>6</sup> Daudi cells were stained with 0.20 ug Anti-Human IL4R (67051-1-Ig, Clone: 1E4C11) (red) or 0.20 ug isotype control antibody (blue) and CoraLite<sup>®</sup>488-Conjugated AffiniPure Goat Anti-Mouse IgG(H+L) with dilution 1:1000. Cells were fixed with 90% MeOH.