

For Research Use Only

# INTS3 Monoclonal antibody

Catalog Number: 67060-1-Ig **Featured Product**



## Basic Information

<b>Catalog Number:</b> 67060-1-Ig	<b>GenBank Accession Number:</b> BC025254	<b>Purification Method:</b> Protein A purification
<b>Size:</b> 150ul , Concentration: 1000 µg/ml by Nanodrop and 500 µg/ml by Bradford method using BSA as the standard;	<b>GeneID (NCBI):</b> 65123	<b>CloneNo.:</b> 2G11B7
<b>Source:</b> Mouse	<b>Full Name:</b> integrator complex subunit 3	<b>Recommended Dilutions:</b> WB 1:2000-1:10000
<b>Isotype:</b> IgG2b	<b>Calculated MW:</b> 118 kDa	
<b>Immunogen Catalog Number:</b> AG9917	<b>Observed MW:</b> 118 kDa	

## Applications

<b>Tested Applications:</b> WB, ELISA	<b>Positive Controls:</b> WB : HEK-293 cells, 4T1 cells, MCF-7 cells, HepG2 cells, Jurkat cells, HSC-T6 cells, PC-12 cells, NIH/3T3 cells, HeLa cells
<b>Species Specificity:</b> Human, Mouse, Rat	

## Background Information

### Storage

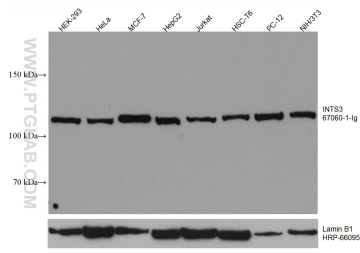
**Storage:**  
Store at -20°C. Stable for one year after shipment.  
**Storage Buffer:**  
PBS with 0.02% sodium azide and 50% glycerol pH 7.3.  
Aliquoting is unnecessary for -20°C storage

**\*\*\* 20ul sizes contain 0.1% BSA**

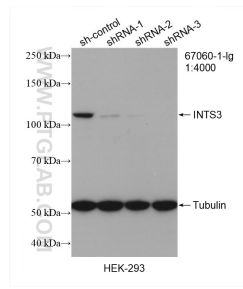
For technical support and original validation data for this product please contact:  
T: 1 (888) 4PTGLAB (1-888-478-4522) (toll free in USA), or 1(312) 455-8498 (outside USA)      E: proteintech@ptglab.com  
W: ptglab.com

**This product is exclusively available under Proteintech Group brand and is not available to purchase from any other manufacturer.**

## Selected Validation Data



Various lysates were subjected to SDS PAGE followed by western blot with 67060-1-Ig (INTS3 antibody) at dilution of 1:5000 incubated at room temperature for 1.5 hours. The membrane was stripped and reblotted with HRP-conjugated Lamin B1 Monoclonal antibody (HRP-66095) as loading control.



WB result of INTS3 antibody (67060-1-Ig; 1:4000; incubated at room temperature for 1.5 hours) with sh-Control and sh-INTS3 transfected HEK-293 cells.