

For Research Use Only

CNTROB Monoclonal antibody, PBS Only (Detector)

Catalog Number: 67061-1-PBS



Basic Information

Catalog Number: 67061-1-PBS	GenBank Accession Number: BC021134	Purification Method: Protein G purification
Size: 100ug , Concentration: 1mg/ml by Nanodrop;	GeneID (NCBI): 116840	CloneNo.: 3D12A4
Source: Mouse	UNIPROT ID: Q8N137	
Isotype: IgG1	Full Name: centrobin, centrosomal BRCA2 interacting protein	
Immunogen Catalog Number: AG25447	Calculated MW: 903 aa, 101 kDa	
	Observed MW: 97 kDa	

Applications

Tested Applications:
WB, IF/ICC, Cytometric bead array, Indirect ELISA

Species Specificity:
human, mouse, rat, pig

Product Information

67061-1-PBS targets CNTROB as part of a matched antibody pair:

MP50605-2: 67061-4-PBS capture and 67061-1-PBS detection (validated in Cytometric bead array)

Unconjugated mouse monoclonal antibody pair in PBS only (BSA and azide free) storage buffer at a concentration of 1 mg/mL, ready for conjugation.

This conjugation ready format makes antibodies ideal for use in many applications including: ELISAs, multiplex assays requiring matched pairs, mass cytometry, and multiplex imaging applications. Antibody use should be optimized by the end user for each application and assay.

Storage

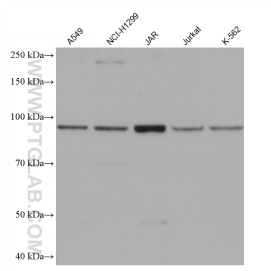
Storage:
Store at -80°C.

Storage Buffer:
PBS Only

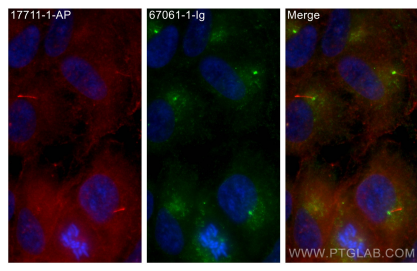
For technical support and original validation data for this product please contact:
T: 1 (888) 4PTGLAB (1-888-478-4522) (toll free in USA), or 1(312) 455-8498 (outside USA)
E: proteintech@ptglab.com
W: ptglab.com

This product is exclusively available under Proteintech Group brand and is not available to purchase from any other manufacturer.

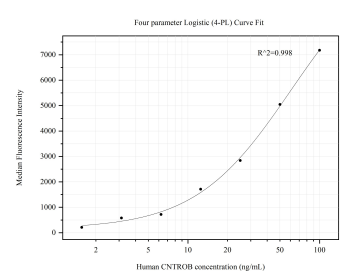
Selected Validation Data



Various lysates were subjected to SDS PAGE followed by western blot with 67061-1-Ig (CNTROB antibody) at dilution of 1:10000 incubated at room temperature for 1.5 hours. This data was developed using the same antibody clone with 67061-1-PBS in a different storage buffer formulation.



Immunofluorescent analysis of (-20°C Methanol) fixed hTERT-RPE1 cells using CNTROB antibody (67061-1-Ig, Clone: 3D12A4) at dilution of 1:350 and CoraLite®488-Conjugated AffiniPure Goat Anti-Mouse IgG(H+L), ARL13B antibody (17711-1-AP, red). This data was developed using the same antibody clone with 67061-1-PBS in a different storage buffer formulation.



Cytometric bead array standard curve of MP50605-2, CNTROB Monoclonal Matched Antibody Pair, PBS Only. Capture antibody: 67061-4-PBS. Detection antibody: 67061-1-PBS. Standard: Ag25447. Range: 1.563-100 ng/mL