

For Research Use Only

PDE4D Monoclonal antibody

Catalog Number: 67062-1-Ig **1 Publications**



Basic Information

Catalog Number: 67062-1-Ig	GenBank Accession Number: BC036319	Purification Method: Protein G purification
Size: 150ul , Concentration: 1600 ug/ml by 5144 Nanodrop and 1000 ug/ml by Bradford method using BSA as the standard;	GeneID (NCBI): 5144	CloneNo.: 1C4B9
Source: Mouse	UNIPROT ID: Q08499	Recommended Dilutions: WB 1:3000-1:10000 IF/ICC 1:800-1:3200
Isotype: IgG1	Full Name: phosphodiesterase 4D, cAMP-specific (phosphodiesterase E3 dunce homolog, Drosophila)	
Immunogen Catalog Number: AG8302	Calculated MW: 809 aa, 91 kDa	
	Observed MW: 91-110 kDa, 66-84 kDa	

Applications

Tested Applications: WB, IF/ICC, ELISA	Positive Controls:
Cited Applications: WB	WB : A549 cells, pig cerebellum tissue, rat brain tissue, rat cerebellum tissue, mouse brain tissue, pig brain tissue, mouse cerebellum tissue
Species Specificity: human, mouse, rat, pig	IF/ICC : A431 cells,
Cited Species: human	

Background Information

PDE4D(cAMP-specific 3',5'-cyclic phosphodiesterase 4D) is also known as DPDE3, PDE43 and belongs to the cyclic nucleotide phosphodiesterase family and PDE4 subfamily. PDE4D subtype may be of particular importance as an antidepressant target in that it is regulated by repeated treatment with both norepinephrine and serotonin reuptake inhibitors as well as by the PDE4 inhibitor rolipram (PMID:16730340). It has some isoforms and all the PDE4D isoforms are expressed in healthy adult human hippocampus and in the hippocampus from a patient with advanced Alzheimer disease (PMID:17353396). Bands of 90-110 kDa correspond to the long PDE4D isoforms, and bands of 66-84 kDa are the short PDE4D isoforms (PMID: 17215491).

Notable Publications

Author	Pubmed ID	Journal	Application
Yimin Sun	36366731	Cancer Med	WB

Storage

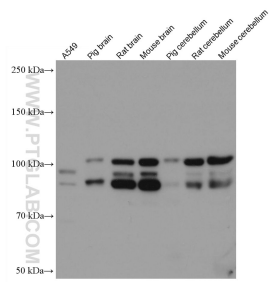
Storage:
Store at -20°C. Stable for one year after shipment.
Storage Buffer:
PBS with 0.02% sodium azide and 50% glycerol pH 7.3.
Aliquoting is unnecessary for -20°C storage

*** 20ul sizes contain 0.1% BSA

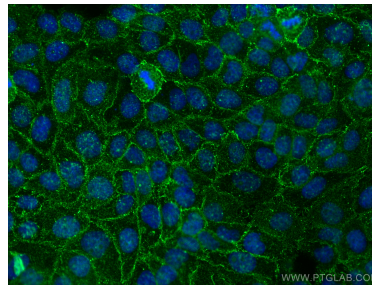
For technical support and original validation data for this product please contact:
T: 1 (888) 4PTGLAB (1-888-478-4522) (toll free in USA), or 1(312) 455-8498 (outside USA)
E: proteintech@ptglab.com
W: ptglab.com

This product is exclusively available under Proteintech Group brand and is not available to purchase from any other manufacturer.

Selected Validation Data



Various lysates were subjected to SDS PAGE followed by western blot with 67062-1-Ig (PDE4D antibody) at dilution of 1:5000 incubated at room temperature for 1.5 hours.



Immunofluorescent analysis of (4% PFA) fixed A431 cells using PDE4D antibody (67062-1-Ig, Clone: 1C4B9) at dilution of 1:1600 and CoraLite®488-Conjugated AffiniPure Goat Anti-Mouse IgG(H+L) (SA00013-1).