

For Research Use Only

# PLCD1 Monoclonal antibody

Catalog Number: 67064-1-Ig



## Basic Information

<b>Catalog Number:</b> 67064-1-Ig	<b>GenBank Accession Number:</b> BC050382	<b>Purification Method:</b> Protein A purification
<b>Size:</b> 150ul , Concentration: 1600 ug/ml by Nanodrop and 1000 ug/ml by Bradford method using BSA as the standard;	<b>GeneID (NCBI):</b> 5333	<b>CloneNo.:</b> 1D10B11
<b>Source:</b> Mouse	<b>UNIPROT ID:</b> P51178	<b>Recommended Dilutions:</b> WB 1:1000-1:6000 IHC 1:150-1:600
<b>Isotype:</b> IgG1	<b>Full Name:</b> phospholipase C, delta 1	
<b>Immunogen Catalog Number:</b> AG5567	<b>Calculated MW:</b> 86 kDa	
	<b>Observed MW:</b> 85 kDa	

## Applications

<b>Tested Applications:</b> WB, IHC, FC (Intra), ELISA	<b>Positive Controls:</b>
<b>Species Specificity:</b> human	<b>WB :</b> human testis tissue, K-562 cells
<b>Note-IHC:</b> suggested antigen retrieval with <b>TE buffer pH 9.0; (*)</b> Alternatively, antigen retrieval may be performed with <b>citrate buffer pH 6.0</b>	<b>IHC :</b> human testis tissue,

## Storage

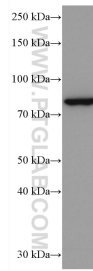
**Storage:**  
Store at -20°C. Stable for one year after shipment.  
**Storage Buffer:**  
PBS with 0.02% sodium azide and 50% glycerol pH 7.3.  
Aliquoting is unnecessary for -20°C storage

\*\*\* 20ul sizes contain 0.1% BSA

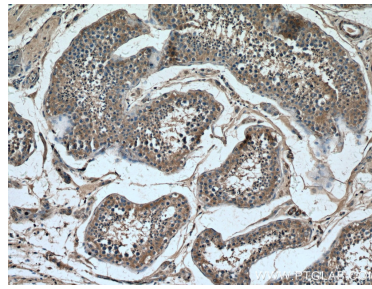
For technical support and original validation data for this product please contact:  
T: 1 (888) 4PTGLAB (1-888-478-4522) (toll free in USA), or 1(312) 455-8498 (outside USA)  
E: [proteintech@ptglab.com](mailto:proteintech@ptglab.com)  
W: [ptglab.com](http://ptglab.com)

This product is exclusively available under Proteintech Group brand and is not available to purchase from any other manufacturer.

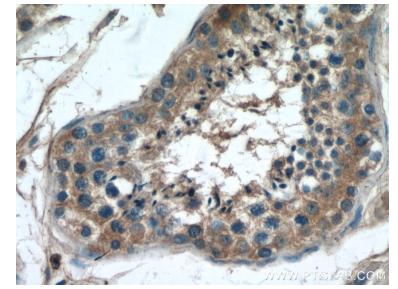
## Selected Validation Data



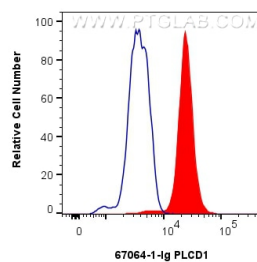
human testis tissue were subjected to SDS PAGE followed by western blot with 67064-1-Ig (PLCD1 antibody) at dilution of 1:3000 incubated at room temperature for 1.5 hours.



Immunohistochemical analysis of paraffin-embedded human testis tissue slide using 67064-1-Ig (PLCD1 antibody) at dilution of 1:300 (under 10x lens). Heat mediated antigen retrieval with Tris-EDTA buffer (pH 9.0).



Immunohistochemical analysis of paraffin-embedded human testis tissue slide using 67064-1-Ig (PLCD1 antibody) at dilution of 1:300 (under 40x lens). Heat mediated antigen retrieval with Tris-EDTA buffer (pH 9.0).



1x10<sup>6</sup> K-562 cells were intracellularly stained with 0.2 ug PLCD1 Monoclonal antibody (67064-1-Ig, Clone:1D10B11) and CoraLite®488-Conjugated Goat Anti-Mouse IgG(H+L) (SA00013-1)(red), or 0.2 ug Mouse IgG1 isotype control Mouse McAb (66360-1-Ig, Clone: 1F8D3) (blue). Cells were fixed with 4% PFA and permeabilized with Flow Cytometry Perm Buffer (PF00011-C).