

For Research Use Only

ASK1 Monoclonal antibody

Catalog Number: 67072-1-Ig **10 Publications**



Basic Information

Catalog Number: 67072-1-Ig	GenBank Accession Number: BC054503	Purification Method: Protein G purification
Size: 150ul, Concentration: 1000 ug/ml by Nanodrop;	GeneID (NCBI): 4217	CloneNo.: 1C3A10
Source: Mouse	UNIPROT ID: Q99683	Recommended Dilutions: WB 1:1000-1:6000 IHC 1:150-1:600 IF/ICC 1:50-1:500
Isotype: IgG1	Full Name: mitogen-activated protein kinase kinase kinase 5	
Immunogen Catalog Number: AG5818	Calculated MW: 155 kDa	
	Observed MW: 110 kDa	

Applications

Tested Applications:
WB, IHC, IF/ICC, ELISA

Cited Applications:
WB, IF

Species Specificity:
Human, Mouse, Rat

Cited Species:
human, mouse, rat

Note-IHC: suggested antigen retrieval with TE buffer pH 9.0; (*) Alternatively, antigen retrieval may be performed with citrate buffer pH 6.0

Positive Controls:

WB : HSC-T6 cells, HEK-293 cells, Jurkat cells, HeLa cells, MCF-7 cells, NIH/3T3 cells

IHC : human pancreas cancer tissue, mouse heart tissue, human lung cancer tissue

IF/ICC : RAW 264.7 cells,

Background Information

ASK1 (Apoptosis signal-regulating kinase 1) is also named as MAP3K5, MAPKKK5, MEKK5 and belongs to the MAP kinase kinase kinase subfamily. It is an evolutionarily conserved mitogen activated protein 3-kinase that activates both Jnk and p38 mitogen-activated protein kinases. ASK1 is activated in response to various cytotoxic stresses including TNF, Fas and reactive oxygen species (ROS) such as H₂O₂, and activates c-Jun NH 2-terminal kinase (JNK) and p38. 67072-1-Ig antibody detects the degraded product of ASK1 in SDS-PAGE.

Notable Publications

Author	Pubmed ID	Journal	Application
Xiao-Lin Jiang	36309912	Aging (Albany NY)	WB
Xiao-Lin Jiang	36465612	Front Endocrinol (Lausanne)	WB
Jiajia Duan	36633130	Mol Med Rep	IF

Storage

Storage:

Store at -20°C. Stable for one year after shipment.

Storage Buffer:

PBS with 0.02% sodium azide and 50% glycerol pH 7.3.

Aliquoting is unnecessary for -20°C storage

*** 20ul sizes contain 0.1% BSA

For technical support and original validation data for this product please contact:

T: 1 (888) 4PTGLAB (1-888-478-4522) (toll free in USA), or 1(312) 455-8498 (outside USA)

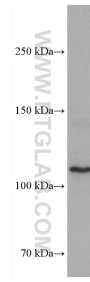
E: proteintech@ptglab.com
W: ptglab.com

This product is exclusively available under Proteintech Group brand and is not available to purchase from any other manufacturer.

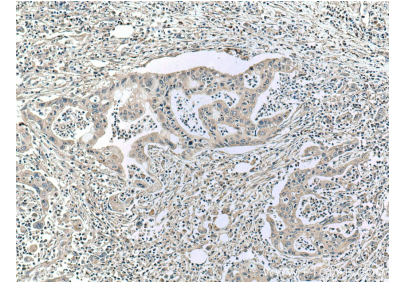
Selected Validation Data



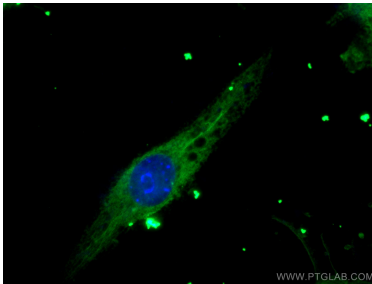
HEK-293 cells were subjected to SDS PAGE followed by western blot with 67072-1-Ig (ASK1 antibody) at dilution of 1:3000 incubated at room temperature for 1.5 hours.



HSC-T6 cells were subjected to SDS PAGE followed by western blot with 67072-1-Ig (ASK1 antibody) at dilution of 1:3000 incubated at room temperature for 1.5 hours.



Immunohistochemical analysis of paraffin-embedded human pancreas cancer tissue slide using 67072-1-Ig (ASK1 antibody) at dilution of 1:300 (under 10x lens. Heat mediated antigen retrieval with Tris-EDTA buffer (pH 9.0)).



Immunofluorescent analysis of (-20°C Ethanol) fixed RAW 264.7 cells using ASK1 antibody (67072-1-Ig, Clone: 1C3A10) at dilution of 1:200 and CoraLite®488-Conjugated Goat Anti-Mouse IgG(H+L).