

For Research Use Only

ASK1 Monoclonal antibody

Catalog Number: 67072-1-Ig 7 Publications



Basic Information

| | | |
|---|--|--|
| Catalog Number: | GenBank Accession Number: | Purification Method: |
| 67072-1-Ig | BC054503 | Protein A purification |
| Size: | GeneID (NCBI): | CloneNo.: |
| 150ul, Concentration: 1200 µg/ml by Nanodrop and 1000 µg/ml by Bradford method using BSA as the standard; | 4217 | 1C3A10 |
| Source: | Full Name: | Recommended Dilutions: |
| Mouse | mitogen-activated protein kinase kinase kinase 5 | WB 1:1000-1:6000 IHC 1:150-1:600 IF 1:50-1:500 |
| Isotype: | Calculated MW: | |
| IgG1 | 155 kDa | |
| Immunogen Catalog Number: | Observed MW: | |
| AG5818 | 110 kDa | |

Applications

| | |
|--|--|
| Tested Applications: | Positive Controls: |
| IF, IHC, WB, ELISA | WB : HSC-T6 cells, HEK-293 cells, Jurkat cells, HeLa cells, MCF-7 cells, NIH/3T3 cells |
| Cited Applications: | IHC : human pancreas cancer tissue, mouse heart tissue, human lung cancer tissue |
| IF, WB | IF : RAW 264.7 cells, |
| Species Specificity: | |
| Human, Mouse, Rat | |
| Cited Species: | |
| human, mouse, rat | |
| Note-IHC: suggested antigen retrieval with TE buffer pH 9.0; (*) Alternatively, antigen retrieval may be performed with citrate buffer pH 6.0 | |

Background Information

ASK1 (Apoptosis signal-regulating kinase 1) is also named as MAP3K5, MAPKKK5, MEKK5 and belongs to the MAP kinase kinase kinase subfamily. It is an evolutionarily conserved mitogen activated protein 3-kinase that activates both Jnk and p38 mitogen-activated protein kinases. ASK1 is activated in response to various cytotoxic stresses including TNF, Fas and reactive oxygen species (ROS) such as H₂O₂, and activates c-Jun NH 2-terminal kinase (JNK) and p38. 67072-1-Ig antibody detects the degraded product of ASK1 in SDS-PAGE.

Notable Publications

| Author | Pubmed ID | Journal | Application |
|----------------|-----------|-----------------------------|-------------|
| Xiao-Lin Jiang | 36309912 | Aging (Albany NY) | WB |
| Xiao-Lin Jiang | 36465612 | Front Endocrinol (Lausanne) | WB |
| Jiajia Duan | 36633130 | Mol Med Rep | IF |

Storage

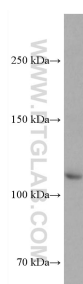
Storage:
Store at -20°C.
Storage Buffer:
PBS with 0.02% sodium azide and 50% glycerol pH 7.3.
Aliquoting is unnecessary for -20°C storage

*** 20ul sizes contain 0.1% BSA

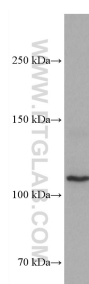
For technical support and original validation data for this product please contact:
T: 1 (888) 4PTGLAB (1-888-478-4522) (toll free in USA), or 1(312) 455-8498 (outside USA)
E: proteintech@ptglab.com
W: ptglab.com

This product is exclusively available under Proteintech Group brand and is not available to purchase from any other manufacturer.

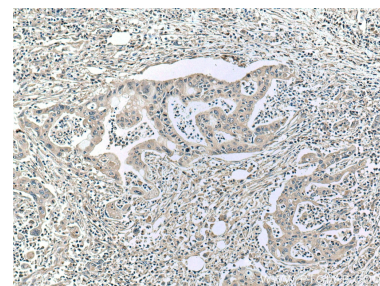
Selected Validation Data



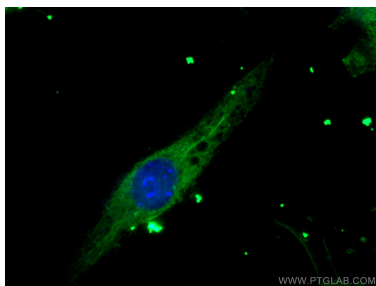
HEK-293 cells were subjected to SDS PAGE followed by western blot with 67072-1-Ig (ASK1 antibody) at dilution of 1:3000 incubated at room temperature for 1.5 hours.



HSC-T6 cells were subjected to SDS PAGE followed by western blot with 67072-1-Ig (ASK1 antibody) at dilution of 1:3000 incubated at room temperature for 1.5 hours.



Immunohistochemical analysis of paraffin-embedded human pancreas cancer tissue slide using 67072-1-Ig (ASK1 antibody) at dilution of 1:300 (under 10x lens. Heat mediated antigen retrieval with Tris-EDTA buffer (pH 9.0)).



Immunofluorescent analysis of (-20°C Ethanol) fixed RAW 264.7 cells using ASK1 antibody (67072-1-Ig, Clone: 1C3A10) at dilution of 1:200 and CoraLite®488-Conjugated AffiniPure Goat Anti-Mouse IgG(H+L).