

For Research Use Only

Endoglin/CD105 Monoclonal antibody, PBS Only



Catalog Number: 67075-1-PBS

Basic Information

Catalog Number: 67075-1-PBS	GenBank Accession Number: BC014271	Purification Method: Protein A purification
Size: 100ug, Concentration: 1 mg/ml by Nanodrop;	GeneID (NCBI): 2022	CloneNo.: 2D5E8
Source: Mouse	UNIPROT ID: P17813	
Isotype: IgG2b	Full Name: endoglin	
Immunogen Catalog Number: AG27837	Calculated MW: 71 kDa	
	Observed MW: 95-100 kDa	

Applications

Tested Applications:
WB, IF, FC, IHC, ELISA

Species Specificity:
Human

Background Information

Endoglin (ENG, CD105) is a homodimeric cell membrane glycoprotein of 180 kDa, composed of disulphide-linked subunits of 95 kDa. Endoglin is a proliferation-associated and hypoxia-inducible protein mainly expressed on vascular endothelial cells. It acts as an accessory receptor for transforming growth factor beta (TGF- β) and is involved in vascular development and remodelling. The important role of Endoglin in angiogenesis and in tumor progression makes it an ideal target for antiangiogenic therapy and a good marker for tumor prognosis. (PMID: 1326540; 14528280; 21737653; 12773481)

Storage

Storage:
Store at -20°C. Stable for one year after shipment.

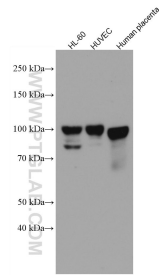
Storage Buffer:
PBS only

Aliquoting is unnecessary for -20°C storage

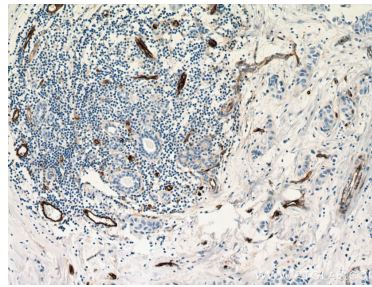
For technical support and original validation data for this product please contact:
T: 1 (888) 4PTGLAB (1-888-478-4522) (toll free in USA), or 1(312) 455-8498 (outside USA)
E: proteintech@ptglab.com
W: ptglab.com

This product is exclusively available under Proteintech Group brand and is not available to purchase from any other manufacturer.

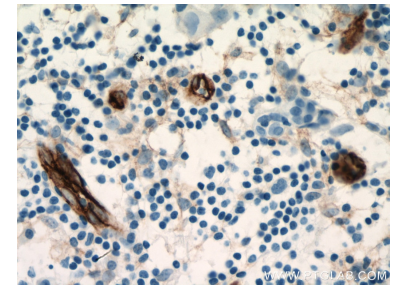
Selected Validation Data



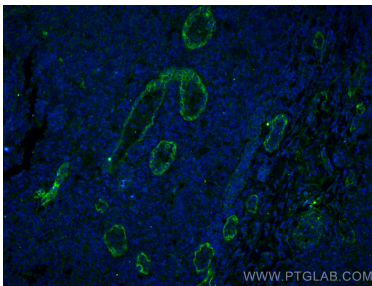
Various lysates were subjected to SDS PAGE followed by western blot with 67075-1-Ig (Endoglin/CD105 antibody) at dilution of 1:10000 incubated at room temperature for 1.5 hours. This data was developed using the same antibody clone with 67075-1-PBS in a different storage buffer formulation.



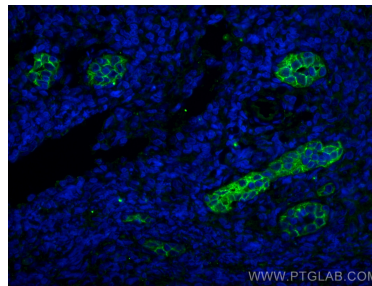
Immunohistochemical analysis of paraffin-embedded human breast cancer tissue slide using 67075-1-Ig (Endoglin/CD105 antibody) at dilution of 1:20000 (under 10x lens. Heat mediated antigen retrieval with Tris-EDTA buffer (pH 9.0). This data was developed using the same antibody clone with 67075-1-PBS in a different storage buffer formulation.



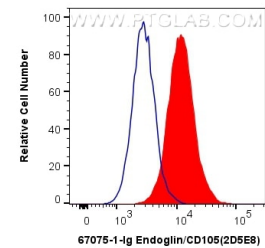
Immunohistochemical analysis of paraffin-embedded human breast cancer tissue slide using 67075-1-Ig (Endoglin/CD105 antibody) at dilution of 1:20000 (under 40x lens. Heat mediated antigen retrieval with Tris-EDTA buffer (pH 9.0). This data was developed using the same antibody clone with 67075-1-PBS in a different storage buffer formulation.



Immunofluorescent analysis of (4% PFA) fixed human tonsillitis tissue using Endoglin/CD105 antibody (67075-1-Ig, Clone: 2D5E8) at dilution of 1:10000 and CoraLite®488-Conjugated AffiniPure Goat Anti-Mouse IgG(H+L). This data was developed using the same antibody clone with 67075-1-PBS in a different storage buffer formulation.



Immunofluorescent analysis of (4% PFA) fixed human tonsillitis tissue using Endoglin/CD105 antibody (67075-1-Ig, Clone: 2D5E8) at dilution of 1:10000 and CoraLite®488-Conjugated AffiniPure Goat Anti-Mouse IgG(H+L). This data was developed using the same antibody clone with 67075-1-PBS in a different storage buffer formulation.



1X10⁶ HUVEC cells were intracellularly stained with 0.25 ug Anti-Human Endoglin/CD105 (67075-1-Ig, Clone:2D5E8) and CoraLite®488-Conjugated AffiniPure Goat Anti-Mouse IgG(H+L) at dilution 1:1000 (red), or 0.25 ug Mouse IgG2b Isotype Control (MPC-11) (65128-1-Ig, Clone: MPC-11) (blue). Cells were fixed with 4% PFA and permeabilized with Flow Cytometry Perm Buffer (PF00011-C). This data was developed using the same antibody clone with 67075-1-