

For Research Use Only

CES1 Monoclonal antibody

Catalog Number: 67079-1-Ig **1 Publications**



Basic Information

Catalog Number: 67079-1-Ig	GenBank Accession Number: BC012418	Purification Method: Protein G purification
Size: 150ul , Concentration: 900 ug/ml by Nanodrop and 700 ug/ml by Bradford method using BSA as the standard;	GeneID (NCBI): 1066	CloneNo.: 1C11C1
Source: Mouse	UNIPROT ID: P23141	Recommended Dilutions: WB 1:2000-1:10000 IHC 1:300-1:1200 IF/ICC 1:50-1:500
Isotype: IgG1	Full Name: carboxylesterase 1 (monocyte/macrophage serine esterase 1)	
Immunogen Catalog Number: AG10647	Calculated MW: 566 aa, 62 kDa	
	Observed MW: 60-63 kDa	

Applications

Tested Applications: WB, IHC, IF/ICC, ELISA	Positive Controls: WB : U-937 cells, THP-1 cells
Cited Applications: WB	IHC : human liver tissue, human liver cancer tissue
Species Specificity: Human	IF/ICC : HepG2 cells,
Cited Species: human	
Note-IHC: suggested antigen retrieval with TE buffer pH 9.0; (*) Alternatively, antigen retrieval may be performed with citrate buffer pH 6.0	

Background Information

CES1(liver carboxylesterase 1) is also named as CES2, SES1 and belongs to the type-B carboxylesterase/lipase family. The deduced 567-amino acid protein contains a putative 18-amino acid signal peptide and a characteristic C-terminal endoplasmic reticulum retention signal (HXEL). It is the major hydrolytic enzyme responsible for the metabolism of numerous therapeutic agents as well as endogenous substrates. Western blot analysis demonstrated that CES1 is expressed in human liver microsomes (HLM) but not in human intestinal microsomes (HIM) (PMID:19185566).

Notable Publications

Author	Pubmed ID	Journal	Application
Chen Feng	39472448	Cell Death Dis	WB

Storage

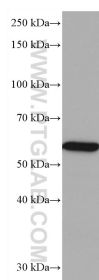
Storage:
Store at -20°C. Stable for one year after shipment.
Storage Buffer:
PBS with 0.02% sodium azide and 50% glycerol pH 7.3.
Aliquoting is unnecessary for -20°C storage

*** 20ul sizes contain 0.1% BSA

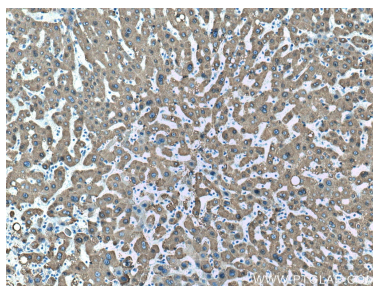
For technical support and original validation data for this product please contact:
T: 1 (888) 4PTGLAB (1-888-478-4522) (toll free in USA), or 1(312) 455-8498 (outside USA)
E: proteintech@ptglab.com
W: ptglab.com

This product is exclusively available under Proteintech Group brand and is not available to purchase from any other manufacturer.

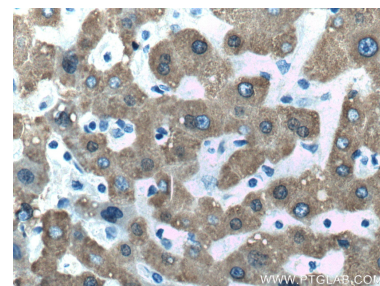
Selected Validation Data



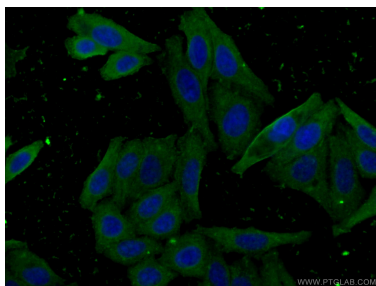
U-937 cells were subjected to SDS PAGE followed by western blot with 67079-1-Ig (CES1 antibody) at dilution of 1:5000 incubated at room temperature for 1.5 hours.



Immunohistochemical analysis of paraffin-embedded human liver tissue slide using 67079-1-Ig (CES1 antibody) at dilution of 1:600 (under 10x lens. Heat mediated antigen retrieval with Tris-EDTA buffer (pH 9.0).



Immunohistochemical analysis of paraffin-embedded human liver tissue slide using 67079-1-Ig (CES1 antibody) at dilution of 1:600 (under 40x lens. Heat mediated antigen retrieval with Tris-EDTA buffer (pH 9.0).



Immunofluorescent analysis of (-20°C Ethanol) fixed HepG2 cells using 67079-1-Ig (CES1 antibody) at dilution of 1:100 and CoraLite488-Conjugated Goat Anti-Mouse IgG(H+L).