

For Research Use Only

EPHB1 Monoclonal antibody

Catalog Number: 67080-1-Ig **1 Publications**



Basic Information

| | | |
|--|--|---|
| Catalog Number: 67080-1-Ig | GenBank Accession Number: BC111744 | Purification Method: Protein A purification |
| Size: 150ul , Concentration: 2200 ug/ml by Nanodrop and 1500 ug/ml by Bradford method using BSA as the standard; | GeneID (NCBI): 2047 | CloneNo.: 1B7C12 |
| Source: Mouse | UNIPROT ID: P54762 | Recommended Dilutions: WB 1:1000-1:4000 |
| Isotype: IgG2b | Full Name: EPH receptor B1 | |
| Immunogen Catalog Number: AG16347 | Calculated MW: 984 aa, 110 kDa | |
| | Observed MW: 110-120 kDa | |

Applications

| | |
|---|---|
| Tested Applications: WB, ELISA | Positive Controls: WB : mouse cerebellum tissue, mouse brain tissue, fetal human brain tissue |
| Cited Applications: WB | |
| Species Specificity: Human, Mouse | |
| Cited Species: rat | |

Background Information

EPHB1, also named as EPHT2, NET, HEK6 and ELK, belongs to the protein kinase superfamily, Tyr protein kinase family, and Ephrin receptor subfamily. It is a receptor for members of the ephrin-B family. EPHB1 binds to ephrin-B1, -B2 and -B3. EPHB1 may be involved in cell-cell interactions in the nervous system. EPHB1 catalyzes the reaction: ATP + a [protein]-L-tyrosine = ADP + a [protein]-L-tyrosine phosphate.

Notable Publications

| Author | Pubmed ID | Journal | Application |
|--------|-----------|---------|-------------|
| Li Liu | 38601015 | Mol Vis | WB |

Storage

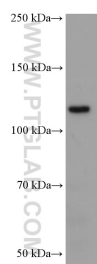
Storage:
Store at -20°C.
Storage Buffer:
PBS with 0.02% sodium azide and 50% glycerol pH 7.3.
Aliquoting is unnecessary for -20°C storage

*** 20ul sizes contain 0.1% BSA

For technical support and original validation data for this product please contact:
T: 1 (888) 4PTGLAB (1-888-478-4522) (toll free in USA), or 1(312) 455-8498 (outside USA)
E: proteintech@ptglab.com
W: ptglab.com

This product is exclusively available under Proteintech Group brand and is not available to purchase from any other manufacturer.

Selected Validation Data



mouse cerebellum tissue were subjected to SDS PAGE followed by western blot with 67080-1-Ig (EPHB1 antibody) at dilution of 1:2000 incubated at room temperature for 1.5 hours.