

For Research Use Only

EPHB1 Monoclonal antibody, PBS Only (Detector)

Catalog Number: 67080-1-PBS



Basic Information

Catalog Number: 67080-1-PBS	GenBank Accession Number: BC111744	Purification Method: Protein A purification
Size: 100ug , Concentration: 1mg/ml by Nanodrop;	GeneID (NCBI): 2047	CloneNo.: 1B7C12
Source: Mouse	UNIPROT ID: P54762	
Isotype: IgG2b	Full Name: EPH receptor B1	
Immunogen Catalog Number: AG16347	Calculated MW: 984 aa, 110 kDa	
	Observed MW: 110-120 kDa	

Applications

Tested Applications:
WB, Cytometric bead array, Indirect ELISA

Species Specificity:
human, mouse

Product Information

67080-1-PBS targets EPHB1 as part of a matched antibody pair:

MP50740-1: 67080-2-PBS capture and 67080-1-PBS detection (validated in Cytometric bead array)

Unconjugated mouse monoclonal antibody pair in PBS only (BSA and azide free) storage buffer at a concentration of 1 mg/mL, ready for conjugation.

This conjugation ready format makes antibodies ideal for use in many applications including: ELISAs, multiplex assays requiring matched pairs, mass cytometry, and multiplex imaging applications. Antibody use should be optimized by the end user for each application and assay.

Background Information

EPHB1, also named as EPHT2, NET, HEK6 and ELK, belongs to the protein kinase superfamily, Tyr protein kinase family, and Ephrin receptor subfamily. It is a receptor for members of the ephrin-B family. EPHB1 binds to ephrin-B1, -B2 and -B3. EPHB1 may be involved in cell-cell interactions in the nervous system. EPHB1 catalyzes the reaction: $ATP + a \text{ [protein]-L-tyrosine} = ADP + a \text{ [protein]-L-tyrosine phosphate}$.

Storage

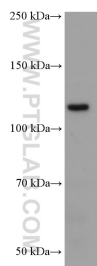
Storage:
Store at -80°C.

Storage Buffer:
PBS Only

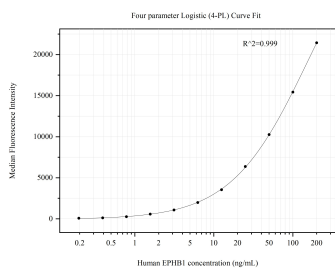
For technical support and original validation data for this product please contact:
T: 1 (888) 4PTGLAB (1-888-478-4522) (toll free in USA), or 1(312) 455-8498 (outside USA)
E: proteintech@ptglab.com
W: ptglab.com

This product is exclusively available under Proteintech Group brand and is not available to purchase from any other manufacturer.

Selected Validation Data



mouse cerebellum tissue were subjected to SDS PAGE followed by western blot with 67080-1-Ig (EPHB1 antibody) at dilution of 1:2000 incubated at room temperature for 1.5 hours. This data was developed using the same antibody clone with 67080-1-PBS in a different storage buffer formulation.



Cytometric bead array standard curve of MP50740-1, EPHB1 Monoclonal Matched Antibody Pair, PBS Only. Capture antibody: 67080-2-PBS. Detection antibody: 67080-1-PBS. Standard: Ag16347. Range: 0.195-200 ng/mL