

For Research Use Only

Myogenin Monoclonal antibody, PBS Only (Capture)

Catalog Number: 67082-1-PBS



Basic Information

Catalog Number: 67082-1-PBS	GenBank Accession Number: BC053899	Purification Method: Protein G purification
Size: 100ug , Concentration: 1mg/ml by Nanodrop;	GeneID (NCBI): 4656	CloneNo.: 1C10B9
Source: Mouse	UNIPROT ID: P15173	
Isotype: IgG1	Full Name: myogenin (myogenic factor 4)	
Immunogen Catalog Number: AG6414	Calculated MW: 25 kDa	
	Observed MW: 26 kDa	

Applications

Tested Applications:
WB, Cytometric bead array, Indirect ELISA

Species Specificity:
human, rat, pig

Product Information

67082-1-PBS targets Myogenin as part of a matched antibody pair:

MP51032-2: 67082-1-PBS capture and 67082-3-PBS detection (validated in Cytometric bead array)

MP51032-3: 67082-1-PBS capture and 67082-4-PBS detection (validated in Cytometric bead array)

Unconjugated mouse monoclonal antibody pair in PBS only (BSA and azide free) storage buffer at a concentration of 1 mg/mL, ready for conjugation.

This conjugation ready format makes antibodies ideal for use in many applications including: ELISAs, multiplex assays requiring matched pairs, mass cytometry, and multiplex imaging applications. Antibody use should be optimized by the end user for each application and assay.

Background Information

MYOG (encoded Myogenin protein) is a muscle-specific transcription factor which belongs to a family of basic helix-loop-helix transcription factors. It plays a role in muscle differentiation, cell cycle exit and muscle atrophy (PMID: 30315160). It can be initiate the myogenic program in myoblasts, fiblasts and veritey of other cell types. Diseases associated with MYOG include Embryonal Rhabdomyosarcoma and Gallbladder Sarcoma.

Storage

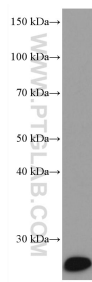
Storage:
Store at -80°C.

Storage Buffer:
PBS Only

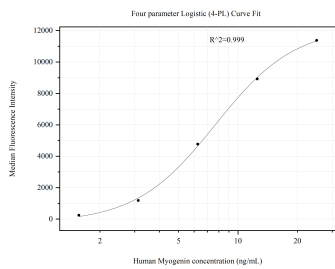
For technical support and original validation data for this product please contact:
T: 1 (888) 4PTGLAB (1-888-478-4522) (toll free in USA), or 1(312) 455-8498 (outside USA)
E: proteintech@ptglab.com
W: ptglab.com

This product is exclusively available under Proteintech Group brand and is not available to purchase from any other manufacturer.

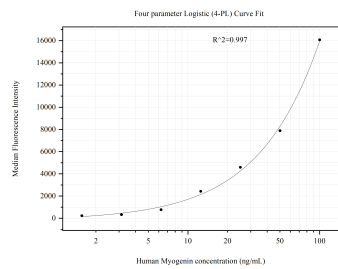
Selected Validation Data



human skeletal muscle tissue were subjected to SDS PAGE followed by western blot with 67082-1-Ig (Myogenin antibody) at dilution of 1:2000 incubated at room temperature for 1.5 hours. This data was developed using the same antibody clone with 67082-1-PBS in a different storage buffer formulation.



Cytometric bead array standard curve of MP51032-2, Myogenin Monoclonal Matched Antibody Pair, PBS Only. Capture antibody: 67082-1-PBS. Detection antibody: 67082-3-PBS. Standard:Ag6414. Range: 1.563-25 ng/mL.



Cytometric bead array standard curve of MP51032-3, Myogenin Monoclonal Matched Antibody Pair, PBS Only. Capture antibody: 67082-1-PBS. Detection antibody: 67082-4-PBS. Standard:Ag6414. Range: 1.563-100 ng/mL.