

For Research Use Only

# SDC2 Monoclonal antibody

Catalog Number: 67088-1-Ig **7 Publications**



## Basic Information

<b>Catalog Number:</b> 67088-1-Ig	<b>GenBank Accession Number:</b> BC049836	<b>Purification Method:</b> Protein A purification
<b>Size:</b> 150ul, Concentration: 2557 ug/ml by Nanodrop and 1000 ug/ml by Bradford method using BSA as the standard;	<b>GeneID (NCBI):</b> 6383	<b>CloneNo.:</b> 3A7B2
<b>Source:</b> Mouse	<b>UNIPROT ID:</b> P34741	<b>Recommended Dilutions:</b> WB 1:2000-1:10000 IHC 1:250-1:1000
<b>Isotype:</b> IgG2a	<b>Full Name:</b> syndecan 2	
<b>Immunogen Catalog Number:</b> AG5739	<b>Calculated MW:</b> 22 kDa	
	<b>Observed MW:</b> 19 kDa, 22 and 48 kDa	

## Applications

<b>Tested Applications:</b> WB, IHC, ELISA	<b>Positive Controls:</b>
<b>Cited Applications:</b> WB, IF, IHC	<b>WB:</b> L02 cells, HuH-7 cells, HepG2 cells, A549 cells, NCI-H1299 cells, Jurkat cells
<b>Species Specificity:</b> Human	<b>IHC:</b> human liver cancer tissue, human colon cancer tissue, human prostate cancer tissue
<b>Cited Species:</b> human, pig	

**Note-IHC: suggested antigen retrieval with *TE buffer pH 9.0*; (\*) Alternatively, antigen retrieval may be performed with *citrate buffer pH 6.0***

## Background Information

SDC2, containing cell surface heparan sulphate proteoglycan, functions as an integral membrane protein and participates in cell proliferation, cell migration, cell adhesion and signal transduction. It has been reported that the expression level of SDC2 will be up-regulated under hypoxia condition which can induce increased release of cytokines and chemokines. Besides, methylated SDC2 can be used as a potential biomarker for early diagnosis of colon cancer. 67088-1-Ig antibody detects the 19 and 22 kDa SDC2 isoforms as well as the 48 kDa dimeric protein in SDS-PAGE. (PMID: 18803305, 23297089, 30022330, 29945573)

## Notable Publications

Author	Pubmed ID	Journal	Application
Ningye Ma	32902825	Cell Oncol (Dordr)	WB
Sheng-Nan Yang	35320391	Heart Vessels	WB
Małgorzata Grabowska	35702951	J Cell Mol Med	WB

## Storage

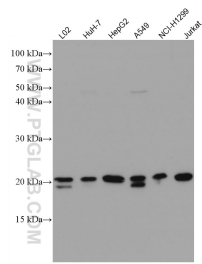
**Storage:**  
Store at -20°C. Stable for one year after shipment.  
**Storage Buffer:**  
PBS with 0.02% sodium azide and 50% glycerol pH 7.3.  
Aliquoting is unnecessary for -20°C storage

**\*\*\* 20ul sizes contain 0.1%BSA**

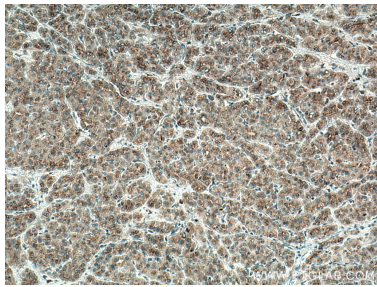
For technical support and original validation data for this product please contact:  
T: 1 (888) 4PTGLAB (1-888-478-4522) (toll free in USA), or 1(312) 455-8498 (outside USA)  
E: [proteintech@ptglab.com](mailto:proteintech@ptglab.com)  
W: [ptglab.com](http://ptglab.com)

**This product is exclusively available under Proteintech Group brand and is not available to purchase from any other manufacturer.**

# Selected Validation Data



Various lysates were subjected to SDS PAGE followed by western blot with 67088-1-Ig (SDC2 antibody) at dilution of 1:5000 incubated at room temperature for 1.5 hours.



Immunohistochemical analysis of paraffin-embedded human liver cancer tissue slide using 67088-1-Ig (SDC2 antibody) at dilution of 1:500 (under 10x lens. Heat mediated antigen retrieval with Tris-EDTA buffer (pH 9.0).