

For Research Use Only

RALA Monoclonal antibody

Catalog Number: 67093-1-Ig

Featured Product

1 Publications



Basic Information

Catalog Number: 67093-1-Ig	GenBank Accession Number: BC039858	Purification Method: Protein A purification
Size: 150ul , Concentration: 2200 µg/ml by Nanodrop and 1000 µg/ml by Bradford method using BSA as the standard;	GeneID (NCBI): 5898	CloneNo.: 1H9H5
Source: Mouse	Full Name: v-ral simian leukemia viral oncogene homolog A (ras related)	Recommended Dilutions: WB 1:5000-1:50000 IHC 1:500-1:2000
Isotype: IgG2a	Calculated MW: 206 aa, 24 kDa	
Immunogen Catalog Number: AG5329	Observed MW: 24 kDa	

Applications

Tested Applications:

FC, IHC, WB, ELISA

Cited Applications:

IF

Species Specificity:

Human, pig

Cited Species:

human

Note-IHC: suggested antigen retrieval with TE buffer pH 9.0; (*) Alternatively, antigen retrieval may be performed with citrate buffer pH 6.0

Positive Controls:

WB : HeLa cells, pig brain tissue, MCF-7 cells, HepG2 cells, Jurkat cells, rat brain tissue, mouse brain tissue

IHC : human breast cancer tissue,

Background Information

Notable Publications

Author	Pubmed ID	Journal	Application
Claire Leist Hinsch	38136383	Cancers (Basel)	IF

Storage

Storage:

Store at -20°C. Stable for one year after shipment.

Storage Buffer:

PBS with 0.02% sodium azide and 50% glycerol pH 7.3.

Aliquoting is unnecessary for -20°C storage

*** 20ul sizes contain 0.1% BSA

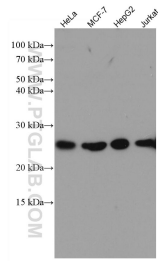
For technical support and original validation data for this product please contact:

T: 1 (888) 4PTGLAB (1-888-478-4522) (toll free in USA), or 1(312) 455-8498 (outside USA)

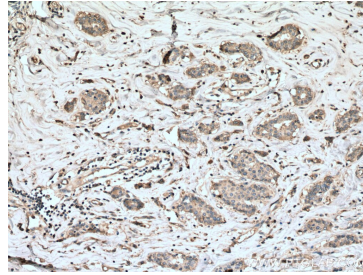
E: proteintech@ptglab.com
W: ptglab.com

This product is exclusively available under Proteintech Group brand and is not available to purchase from any other manufacturer.

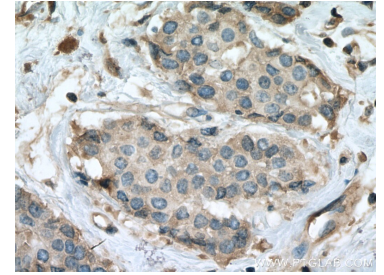
Selected Validation Data



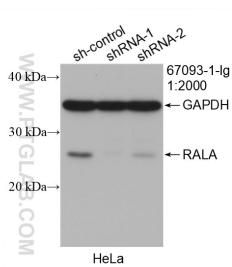
Various lysates were subjected to SDS PAGE followed by western blot with 67093-1-Ig (RALA antibody) at dilution of 1:10000 incubated at room temperature for 1.5 hours.



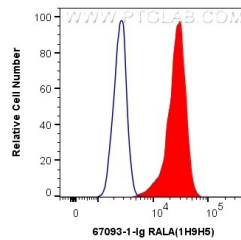
Immunohistochemical analysis of paraffin-embedded human breast cancer tissue slide using 67093-1-Ig (RALA antibody) at dilution of 1:1000 (under 10x lens). Heat mediated antigen retrieval with Tris-EDTA buffer (pH 9.0).



Immunohistochemical analysis of paraffin-embedded human breast cancer tissue slide using 67093-1-Ig (RALA antibody) at dilution of 1:1000 (under 40x lens). Heat mediated antigen retrieval with Tris-EDTA buffer (pH 9.0).



WB result of RALA antibody (67093-1-Ig; 1:400; incubated at room temperature for 1.5 hours) with sh-Control and sh-RALA transfected HeLa cells.



1×10^6 MCF-7 cells were intracellularly stained with 0.4 ug Anti-Human RALA (67093-1-Ig, Clone:1H9H5) and CoraLite@488-Conjugated AffiniPure Goat Anti-Mouse IgG(H+L) at dilution 1:1000 (red), or 0.4 ug Mouse IgG2a Isotype Control (C1.18.4) (65208-1-Ig, Clone: C1.18.4) (blue). Cells were fixed with 4% PFA and permeabilized with Flow Cytometry Perm Buffer (PF00011-C).