

For Research Use Only

RALB Monoclonal antibody, PBS Only (Detector)



Catalog Number: 67094-1-PBS

Basic Information

Catalog Number: 67094-1-PBS	GenBank Accession Number: BC018163	Purification Method: Protein A purification
Size: 100ug , Concentration: 1mg/ml by Nanodrop;	GeneID (NCBI): 5899	CloneNo.: 1D11C11
Source: Mouse	UNIPROT ID: P11234	Affinity: $K_D = 1.82 \times 10^{-10}M$
Isotype: IgG2a	Full Name: v-ral simian leukemia viral oncogene homolog B (ras related; GTP binding protein)	$K_{Off} = 2.54 \times 10^{-6}M$ $K_{On} = 1.40 \times 10^4M$
Immunogen Catalog Number: AG28600	Calculated MW: 206 aa, 23 kDa	
	Observed MW: 24 kDa	

Applications

Tested Applications:
WB, IF, IHC, Indirect ELISA, Cytometric bead array

Species Specificity:
Human, rat, pig, mouse

Product Information

67094-1-PBS targets RALB as part of a matched antibody pair.

MP50129-1: 67094-2-PBS capture and 67094-1-PBS detection (validated in Cytometric bead array, Sandwich ELISA)

Unconjugated mouse monoclonal antibody pair in PBS only (BSA and azide free) storage buffer at a concentration of 1 mg/mL, ready for conjugation.

This conjugation ready format makes antibodies ideal for use in many applications including: ELISAs, multiplex assays requiring matched pairs, mass cytometry, and multiplex imaging applications. Antibody use should be optimized by the end user for each application and assay.

Storage

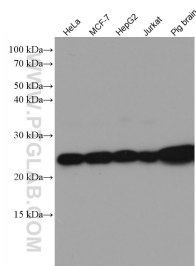
Storage:
Store at -80°C.

Storage Buffer:
PBS Only

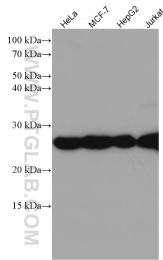
For technical support and original validation data for this product please contact:
T: 1 (888) 4PTGLAB (1-888-478-4522) (toll free in USA), or 1(312) 455-8498 (outside USA)
E: proteintech@ptglab.com
W: ptglab.com

This product is exclusively available under Proteintech Group brand and is not available to purchase from any other manufacturer.

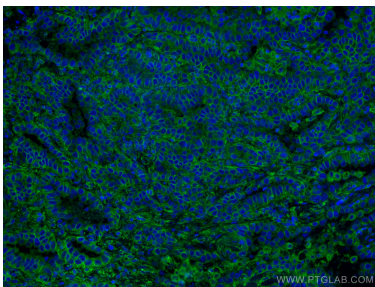
Selected Validation Data



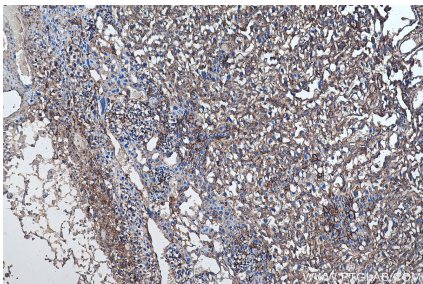
Various lysates were subjected to SDS PAGE followed by western blot with 67094-1-Ig (RALB antibody) at dilution of 1:3000 incubated at room temperature for 1.5 hours. This data was developed using the same antibody clone with 67094-1-PBS in a different storage buffer formulation.



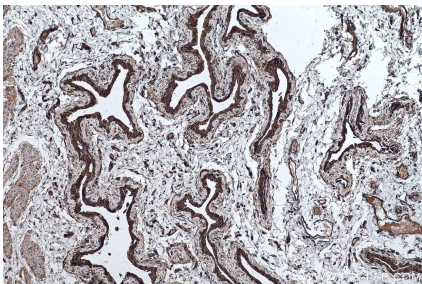
Various lysates were subjected to SDS PAGE followed by western blot with 67094-1-Ig (RALB antibody) at dilution of 1:10000 incubated at room temperature for 1.5 hours. This data was developed using the same antibody clone with 67094-1-PBS in a different storage buffer formulation.



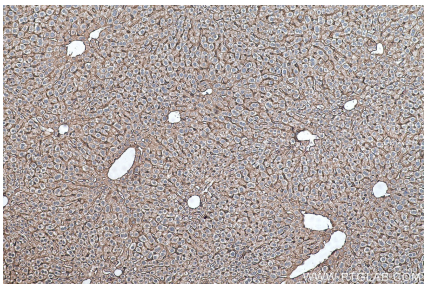
Immunofluorescent analysis of (4% PFA) fixed human lung cancer tissue using RALB antibody (67094-1-Ig, Clone: 1D11C11) at dilution of 1:800 and CoraLite®488-Conjugated AffiniPure Goat Anti-Mouse IgG(H+L). This data was developed using the same antibody clone with 67094-1-PBS in a different storage buffer formulation.



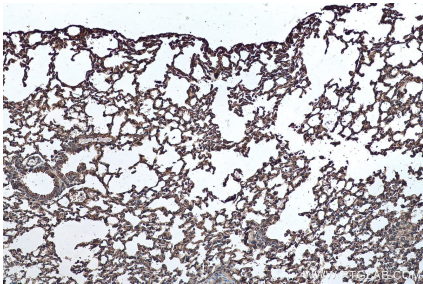
Immunohistochemical analysis of paraffin-embedded mouse placenta tissue slide using 67094-1-Ig (RALB antibody) at dilution of 1:1000 (under 10x lens). Heat mediated antigen retrieval with Tris-EDTA buffer (pH 9.0). This data was developed using the same antibody clone with 67094-1-PBS in a different storage buffer formulation.



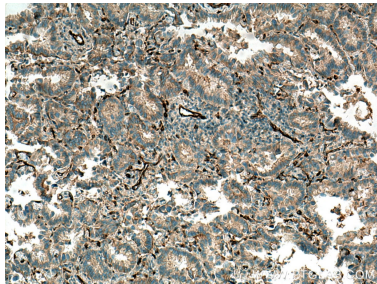
Immunohistochemical analysis of paraffin-embedded mouse bladder tissue slide using 67094-1-Ig (RALB antibody) at dilution of 1:1000 (under 10x lens). Heat mediated antigen retrieval with Tris-EDTA buffer (pH 9.0). This data was developed using the same antibody clone with 67094-1-PBS in a different storage buffer formulation.



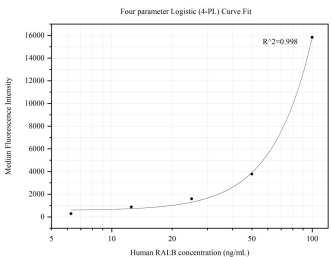
Immunohistochemical analysis of paraffin-embedded mouse liver tissue slide using 67094-1-Ig (RALB antibody) at dilution of 1:1000 (under 10x lens). Heat mediated antigen retrieval with Tris-EDTA buffer (pH 9.0). This data was developed using the same antibody clone with 67094-1-PBS in a different storage buffer formulation.



Immunohistochemical analysis of paraffin-embedded mouse lung tissue slide using 67094-1-Ig (RALB antibody) at dilution of 1:1000 (under 10x lens). Heat mediated antigen retrieval with Tris-EDTA buffer (pH 9.0). This data was developed using the same antibody clone with 67094-1-PBS in a different storage buffer formulation.



Immunohistochemical analysis of paraffin-embedded human lung cancer tissue slide using 67094-1-Ig (RALB antibody) at dilution of 1:1000 (under 10x lens). Heat mediated antigen retrieval with Tris-EDTA buffer (pH 9.0). This data was developed using the same antibody clone with 67094-1-PBS in a different storage buffer formulation.



Cytometric bead array standard curve of MP50129-1. RALB Monoclonal Matched Antibody Pair, PBS Only. Capture antibody: 67094-2-PBS. Detection antibody: 67094-1-PBS. Standard:Ag28600. Range: 6.25-100 ng/mL.