

For Research Use Only

ELAVL2 Monoclonal antibody

Catalog Number: 67097-1-Ig **2 Publications**



Basic Information

Catalog Number: 67097-1-Ig	GenBank Accession Number: BC030692	Purification Method: Protein G purification
Size: 150ul , Concentration: 1000 µg/ml by Nanodrop;	GeneID (NCBI): 1993	CloneNo.: 2D8C10
Source: Mouse	Full Name: ELAV (embryonic lethal, abnormal vision, Drosophila)-like 2 (Hu antigen B)	Recommended Dilutions: WB 1:5000-1:50000
Isotype: IgG1	Calculated MW: 39 kDa	
Immunogen Catalog Number: AG28310	Observed MW: 35-40 kDa	

Applications

Tested Applications:

WB, ELISA

Cited Applications:

IF, WB

Species Specificity:

Human, mouse, rat, pig, rabbit

Cited Species:

human, mouse

Positive Controls:

WB : HEK-293 cells, SH-SY5Y cells, PC-12 cells, Neuro-2a cells, pig brain tissue, rabbit brain tissue, rat brain tissue, mouse brain tissue

Background Information

The ELAV (embryonic lethal abnormal visual system) gene of *D. Melanogaste* is the the first identified member of a family of neuronal RNA binding proteins that is conserved in metazoans. The proteins in this family contain three RNA Recognition Motifs (RRM), with a hinge region separating the second and third RRM and an optional non-conserved N-terminal region. The hinge includes signals essential for nuclear export and subcellular localization [PMID:9874760]. Elav is expressed specifically in the neurons and is required for the correct development and maintenance of the nervous system. ELAVL2 can binds RNA, and recognize a GAAA motif. In addition, it can bind to its own 3'-UTR, the FOS 3'-UTR and the ID 3'-UTR [PMID:18715504,21695151].

Notable Publications

Author	Pubmed ID	Journal	Application
Dominika Grzejda	36170367	Sci Adv	WB
Sandra Diaz-Garcia	34618203	Acta Neuropathol	IF

Storage

Storage:

Store at -20°C. Stable for one year after shipment.

Storage Buffer:

PBS with 0.02% sodium azide and 50% glycerol pH 7.3.

Aliquoting is unnecessary for -20°C storage

*** 20ul sizes contain 0.1% BSA

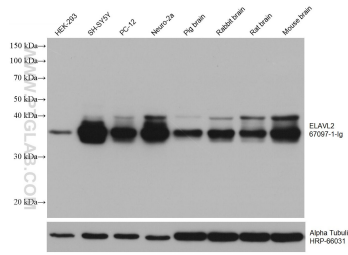
For technical support and original validation data for this product please contact:

T: 1 (888) 4PTGLAB (1-888-478-4522) (toll free in USA), or 1(312) 455-8498 (outside USA)

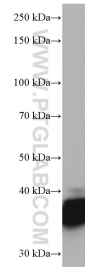
E: proteintech@ptglab.com
W: ptglab.com

This product is exclusively available under Proteintech Group brand and is not available to purchase from any other manufacturer.

Selected Validation Data



Various lysates were subjected to SDS PAGE followed by western blot with 67097-1-Ig (ELAVL2 antibody) at dilution of 1:10000 incubated at room temperature for 1.5 hours. The membrane was stripped and reblotted with HRP-conjugated Alpha Tubulin Monoclonal antibody (HRP-66031) as loading control.



Neuro-2a cells were subjected to SDS PAGE followed by western blot with 67097-1-Ig (ELAVL2 antibody) at dilution of 1:10000 incubated at room temperature for 1.5 hours.