

For Research Use Only

# MCM4 Monoclonal antibody

Catalog Number: 67103-1-Ig **1 Publications**



## Basic Information

<b>Catalog Number:</b> 67103-1-Ig	<b>GenBank Accession Number:</b> BC031061	<b>Purification Method:</b> Protein A purification
<b>Size:</b> 150ul , Concentration: 1900 ug/ml by Nanodrop and 1000 ug/ml by Bradford method using BSA as the standard;	<b>GeneID (NCBI):</b> 4173	<b>CloneNo.:</b> 2H2A1
<b>Source:</b> Mouse	<b>UNIPROT ID:</b> P33991	<b>Recommended Dilutions:</b> WB 1:5000-1:20000
<b>Isotype:</b> IgG2b	<b>Full Name:</b> minichromosome maintenance complex component 4	
<b>Immunogen Catalog Number:</b> AG28642	<b>Calculated MW:</b> 863 aa, 97 kDa	
	<b>Observed MW:</b> 97 kDa	

## Applications

<b>Tested Applications:</b> WB, ELISA	<b>Positive Controls:</b> WB : HeLa cells, HSC-T6 cells, NIH/3T3 cells, HEK-293 cells, A431 cells, HL-60 cells, Jurkat cells
<b>Cited Applications:</b> WB	
<b>Species Specificity:</b> Human, mouse, rat	
<b>Cited Species:</b> human, mouse	

## Background Information

DNA replication licensing factor MCM4 (MCM4), also named Cdc21, acts as component of the MCM2-7 complex (MCM complex) which is the putative replicative helicase essential for 'once per cell cycle' DNA replication initiation and elongation in eukaryotic cells. The active ATPase sites in the MCM2-7 ring are formed through the interaction surfaces of two neighboring subunits such that a critical structure of a conserved arginine finger motif is provided in trans relative to the ATP-binding site of the Walker A box of the adjacent subunit. The six ATPase active sites, however, are likely to contribute differentially to the complex helicase activity.

## Notable Publications

Author	Pubmed ID	Journal	Application
Xuewei Zhang	39290263	Heliyon	WB

## Storage

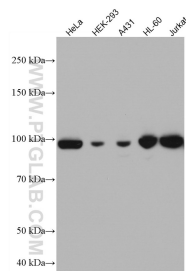
**Storage:**  
Store at -20°C. Stable for one year after shipment.  
**Storage Buffer:**  
PBS with 0.02% sodium azide and 50% glycerol pH 7.3.  
**Aliquoting is unnecessary for -20°C storage**

\*\*\* 20ul sizes contain 0.1% BSA

For technical support and original validation data for this product please contact:  
T: 1 (888) 4PTGLAB (1-888-478-4522) (toll free in USA), or 1(312) 455-8498 (outside USA)  
E: [proteintech@ptglab.com](mailto:proteintech@ptglab.com)  
W: [ptglab.com](http://ptglab.com)

This product is exclusively available under Proteintech Group brand and is not available to purchase from any other manufacturer.

## Selected Validation Data



Various lysates were subjected to SDS PAGE followed by western blot with 67103-1-Ig (MCM4 antibody) at dilution of 1:10000 incubated at room temperature for 1.5 hours.