

For Research Use Only

# IDE Monoclonal antibody

Catalog Number: 67106-1-Ig

Featured Product

1 Publications



## Basic Information

<b>Catalog Number:</b> 67106-1-Ig	<b>GenBank Accession Number:</b> BC096336	<b>Purification Method:</b> Protein A purification
<b>Size:</b> 150ul , Concentration: 2500 µg/ml by Nanodrop and 1000 µg/ml by Bradford method using BSA as the standard;	<b>GeneID (NCBI):</b> 3416	<b>CloneNo.:</b> 3E10G1
<b>Source:</b> Mouse	<b>Full Name:</b> Abeta degrading protease	<b>Recommended Dilutions:</b> WB 1:5000-1:50000
<b>Isotype:</b> IgG2b	<b>Calculated MW:</b> 1019 aa, 118 kDa	
<b>Immunogen Catalog Number:</b> AG17161	<b>Observed MW:</b> 100-120 kDa	

## Applications

<b>Tested Applications:</b> WB, ELISA	<b>Positive Controls:</b> WB : HeLa cells, A375 cells, HepG2 cells, Jurkat cells, HSC-T6 cells, NIH/3T3 cells, RAW 264.7 cells, A431 cells, HEK-293 cells, MCF-7 cells, NCCIT cells, HT-1080 cells, LNCaP cells
<b>Cited Applications:</b> WB	
<b>Species Specificity:</b> Human, Mouse, Rat	
<b>Cited Species:</b> mouse	

## Background Information

IDE(INS-degrading enzyme) belongs to the peptidase M16 family. It is also known as insulysin and is a 110-kD neutral metallopeptidase that can degrade a number of peptides, including INS and beta-amyloid(PMID:9830016). The reduction of IDE expression may be a risk factor for AD, and that IDE may interact with APOE status to affect beta-amyloid metabolism(PMID:12507914). It can exist as a homodimer and form higher oligomers(PMID:17613531).

## Notable Publications

Author	Pubmed ID	Journal	Application
Qian Su	36726048	Mol Nutr Food Res	WB

## Storage

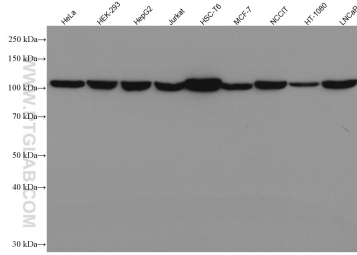
**Storage:**  
Store at -20°C. Stable for one year after shipment.  
**Storage Buffer:**  
PBS with 0.02% sodium azide and 50% glycerol pH 7.3.  
**Aliquoting is unnecessary for -20°C storage**

\*\*\* 20ul sizes contain 0.1%BSA

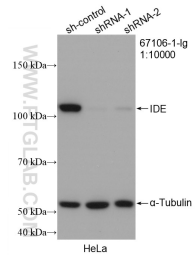
For technical support and original validation data for this product please contact:  
T: 1 (888) 4PTGLAB (1-888-478-4522) (toll free in USA), or 1(312) 455-8498 (outside USA)  
E: proteintech@ptglab.com  
W: ptglab.com

This product is exclusively available under Proteintech Group brand and is not available to purchase from any other manufacturer.

## Selected Validation Data



Various lysates were subjected to SDS PAGE followed by western blot with 67106-1-Ig (IDE antibody) at dilution of 1:10000 incubated at room temperature for 1.5 hours.



WB result of IDE antibody (67106-1-Ig; 1:10000; incubated at room temperature for 1.5 hours) with sh-Control and sh-IDE transfected HeLa cells.