

For Research Use Only

IDE Monoclonal antibody, PBS Only

Catalog Number: 67106-1-PBS

Featured Product



Basic Information

Catalog Number:

67106-1-PBS

Size:

100ug, Concentration: 1mg/ml by Nanodrop;

Source:

Mouse

Isotype:

IgG2b

Immunogen Catalog Number:

AG17161

GenBank Accession Number:

BC096336

GeneID (NCBI):

3416

UNIPROT ID:

P14735

Full Name:

Abeta degrading protease

Calculated MW:

1019 aa, 118 kDa

Observed MW:

100-120 kDa

Purification Method:

Protein A purification

CloneNo.:

3E10G1

Applications

Tested Applications:

WB, IHC, Indirect ELISA

Species Specificity:

human, mouse, rat

Background Information

IDE(INS-degrading enzyme) belongs to the peptidase M16 family. It is also known as insulysin and is a 110-kD neutral metallopeptidase that can degrade a number of peptides, including INS and beta-amyloid(PMID:9830016). The reduction of IDE expression may be a risk factor for AD, and that IDE may interact with APOE status to affect beta-amyloid metabolism(PMID:12507914). It can exist as a homodimer and form higher oligomers(PMID:17613531).

Storage

Storage:

Store at -80°C.

Storage Buffer:

PBS Only

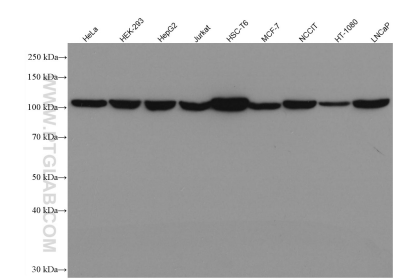
For technical support and original validation data for this product please contact:

T: 1 (888) 4PTGLAB (1-888-478-4522) (toll free in USA), or 1(312) 455-8498 (outside USA)

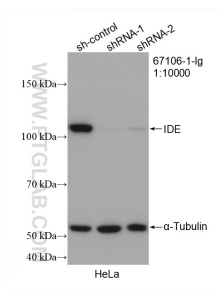
E: proteintech@ptglab.com
W: ptglab.com

This product is exclusively available under Proteintech Group brand and is not available to purchase from any other manufacturer.

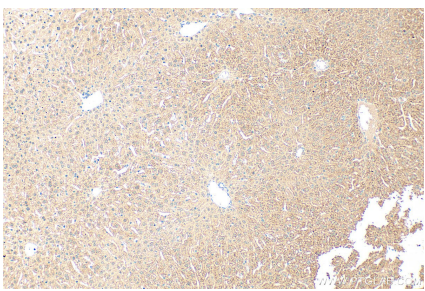
Selected Validation Data



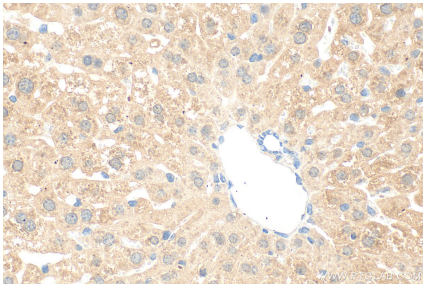
Various lysates were subjected to SDS PAGE followed by western blot with 67106-1-Ig (IDE antibody) at dilution of 1:10000 incubated at room temperature for 1.5 hours. This data was developed using the same antibody clone with 67106-1-PBS in a different storage buffer formulation.



WB result of IDE antibody (67106-1-Ig; 1:10000; incubated at room temperature for 1.5 hours) with sh-Control and sh-IDE transfected HeLa cells. This data was developed using the same antibody clone with 67106-1-PBS in a different storage buffer formulation.



Immunohistochemical analysis of paraffin-embedded mouse liver tissue slide using 67106-1-Ig (IDE antibody) at dilution of 1:1000 (under 10x lens). Heat mediated antigen retrieval with Tris-EDTA buffer (pH 9.0). This data was developed using the same antibody clone with 67106-1-PBS in a different storage buffer formulation.



Immunohistochemical analysis of paraffin-embedded mouse liver tissue slide using 67106-1-Ig (IDE antibody) at dilution of 1:1000 (under 40x lens). Heat mediated antigen retrieval with Tris-EDTA buffer (pH 9.0). This data was developed using the same antibody clone with 67106-1-PBS in a different storage buffer formulation.