

For Research Use Only

Calpastatin Monoclonal antibody

Catalog Number: 67107-1-Ig **2 Publications**



Basic Information

Catalog Number: 67107-1-Ig	GenBank Accession Number: BC013579	Purification Method: Protein G purification
Size: 150ul , Concentration: 1900 µg/ml by Nanodrop and 880 µg/ml by Bradford method using BSA as the standard;	GeneID (NCBI): 831	CloneNo.: 1G12A2
Source: Mouse	Full Name: calpastatin	Recommended Dilutions: WB 1:1000-1:6000 IF 1:200-1:800
Isotype: IgG1	Calculated MW: 667 aa, 72 kDa	
Immunogen Catalog Number: AG28669	Observed MW: 115 kDa	

Applications

Tested Applications: FC, IF, WB, ELISA	Positive Controls:
Cited Applications: WB	WB : HeLa cells, HepG2 cells, LNCaP cells, MCF-7 cells, THP-1 cells, HEK-293 cells
Species Specificity: Human	IF : HeLa cells,
Cited Species: mouse	

Background Information

Notable Publications

Author	Pubmed ID	Journal	Application
Juan Wang	35026406	Pharmacol Res	WB
Fengming Shen	35498131	Oxid Med Cell Longev	WB

Storage

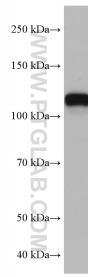
Storage:
Store at -20°C. Stable for one year after shipment.
Storage Buffer:
PBS with 0.02% sodium azide and 50% glycerol pH 7.3.
Aliquoting is unnecessary for -20°C storage

*** 20ul sizes contain 0.1% BSA

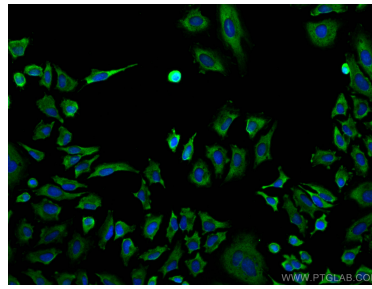
For technical support and original validation data for this product please contact:
T: 1 (888) 4PTGLAB (1-888-478-4522) (toll free in USA), or 1(312) 455-8498 (outside USA)
E: proteintech@ptglab.com
W: ptglab.com

This product is exclusively available under Proteintech Group brand and is not available to purchase from any other manufacturer.

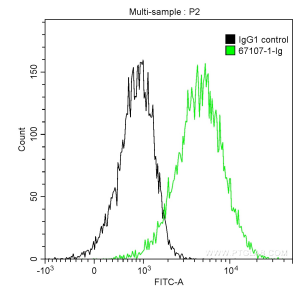
Selected Validation Data



HeLa cells were subjected to SDS PAGE followed by western blot with 67107-1-Ig (CAST antibody) at dilution of 1:4000 incubated at room temperature for 1.5 hours.



Immunofluorescent analysis of (-20°C Ethanol) fixed HeLa cells using Calpastatin antibody (67107-1-Ig, Clone: 1G12A2) at dilution of 1:400 and CoraLite@488-Conjugated AffiniPure Goat Anti-Mouse IgG(H+L).



1X10⁶ HeLa cells were intracellularly stained with 0.2 ug Anti-Human Calpastatin (67107-1-Ig, Clone:1G12A2) and CoraLite@488-Conjugated AffiniPure Goat Anti-Mouse IgG(H+L) at dilution 1:1000 (green), and 0.2 ug Mouse IgG1 Isotype Control (66360-1-Ig, Clone: T1F8D3F10) (black). Cells were fixed with 4% PFA and permeabilized with 0.1% TritonX-100.