

For Research Use Only

CYP3A4 Monoclonal antibody

Catalog Number: 67110-1-Ig **4 Publications**



Basic Information

Catalog Number: 67110-1-Ig	GenBank Accession Number: BC101631	Purification Method: Protein A purification
Size: 150ul, Concentration: 2000 ug/ml by Nanodrop and 1005 ug/ml by Bradford method using BSA as the standard;	GeneID (NCBI): 1576	CloneNo.: 2F11C4
Source: Mouse	UNIPROT ID: P08684	Recommended Dilutions: WB 1:5000-1:50000 IHC 1:300-1:1200 IF-P 1:200-1:800 IF/ICC 1:400-1:1600
Isotype: IgG1	Full Name: cytochrome P450, family 3, subfamily A, polypeptide 4	
Immunogen Catalog Number: AG13074	Calculated MW: 503 aa, 57 kDa	
	Observed MW: 51-57 kDa	

Applications

Tested Applications: WB, IHC, IF/ICC, IF-P, ELISA	Positive Controls:
Cited Applications: WB, IF	WB: mouse liver tissue, pig liver tissue, pig gall bladder tissue, mouse lung tissue, rat liver tissue
Species Specificity: human, mouse, rat, pig	IHC: mouse liver tissue, human liver cancer tissue
Cited Species: human, mouse	IF-P: mouse liver tissue, rat liver tissue
Note-IHC: suggested antigen retrieval with TE buffer pH 9.0; (*) Alternatively, antigen retrieval may be performed with citrate buffer pH 6.0	IF/ICC: HepG2 cells,

Notable Publications

Author	Pubmed ID	Journal	Application
Rong Li	35507159	Methods Mol Biol	IF
Rong Li	35371477	Biomed Rep	IF
Lei Sun	39954312	Biomaterials	WB

Storage

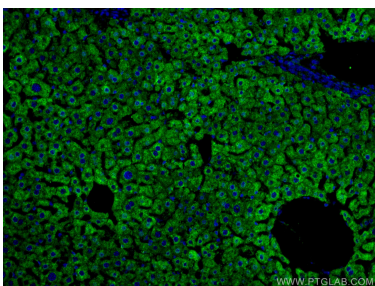
Storage:
Store at -20°C. Stable for one year after shipment.
Storage Buffer:
PBS with 0.02% sodium azide and 50% glycerol, pH7.3
Aliquoting is unnecessary for -20°C storage

*** 20ul sizes contain 0.1% BSA

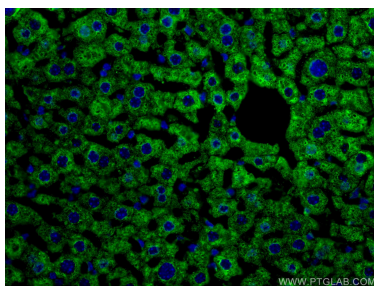
For technical support and original validation data for this product please contact:
T: 1 (888) 4PTGLAB (1-888-478-4522) (toll free in USA), or 1(312) 455-8498 (outside USA)
E: proteintech@ptglab.com
W: ptglab.com

This product is exclusively available under Proteintech Group brand and is not available to purchase from any other manufacturer.

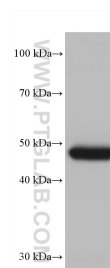
Selected Validation Data



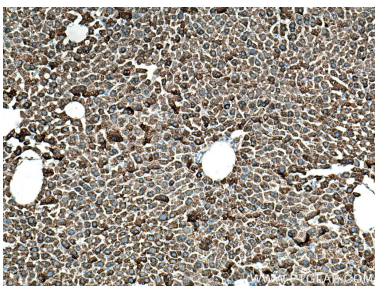
Immunofluorescent analysis of (4% PFA) fixed mouse liver tissue using CYP3A4 antibody (67110-1-Ig, Clone: 2F11C4) at dilution of 1:400 and CoraLite®488-Conjugated AffiniPure Goat Anti-Mouse IgG(H+L).



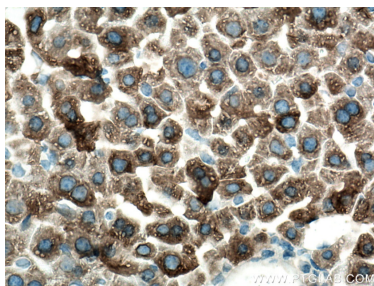
Immunofluorescent analysis of (4% PFA) fixed mouse liver tissue using CYP3A4 antibody (67110-1-Ig, Clone: 2F11C4) at dilution of 1:400 and CoraLite®488-Conjugated AffiniPure Goat Anti-Mouse IgG(H+L).



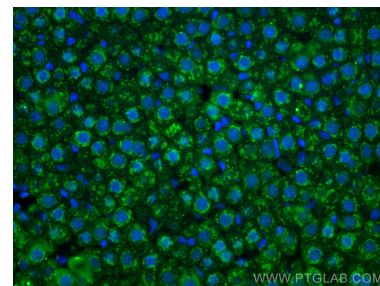
mouse liver tissue were subjected to SDS PAGE followed by western blot with 67110-1-Ig (CYP3A4 antibody) at dilution of 1:20000 incubated at room temperature for 1.5 hours.



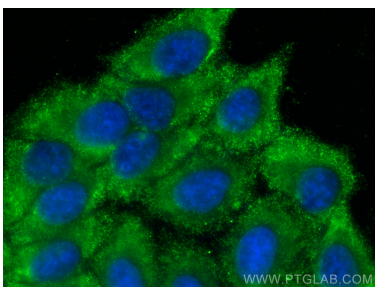
Immunohistochemical analysis of paraffin-embedded mouse liver tissue slide using 67110-1-Ig (CYP3A4 antibody) at dilution of 1:600 (under 10x lens). Heat mediated antigen retrieval with Tris-EDTA buffer (pH 9.0).



Immunohistochemical analysis of paraffin-embedded mouse liver tissue slide using 67110-1-Ig (CYP3A4 antibody) at dilution of 1:600 (under 40x lens). Heat mediated antigen retrieval with Tris-EDTA buffer (pH 9.0).



Immunofluorescent analysis of (4% PFA) fixed rat liver tissue using CYP3A4 antibody (67110-1-Ig, Clone: 2F11C4) at dilution of 1:1000 and CoraLite®488-Conjugated AffiniPure Goat Anti-Mouse IgG(H+L).



Immunofluorescent analysis of (-20°C Ethanol) fixed HepG2 cells using CYP3A4 antibody (67110-1-Ig, Clone: 2F11C4) at dilution of 1:800 and CoraLite®488-Conjugated Goat Anti-Mouse IgG(H+L) (SA00013-1).