

For Research Use Only

INA Monoclonal antibody, PBS Only

Catalog Number: 67120-1-PBS



Basic Information

Catalog Number: 67120-1-PBS	GenBank Accession Number: BC006359	Purification Method: Protein A purification
Size: 100ug , Concentration: 1 mg/ml by Nanodrop;	GeneID (NCBI): 9118	CloneNo.: 3C12A8
Source: Mouse	UNIPROT ID: Q16352	
Isotype: IgG2a	Full Name: internexin neuronal intermediate filament protein, alpha	
Immunogen Catalog Number: AG13655	Calculated MW: 55 kDa	
	Observed MW: 60-66 kDa	

Applications

Tested Applications:
WB, IHC, Indirect ELISA

Species Specificity:
Human, Mouse, Rat, Pig

Background Information

INA, also named as Alpha internexin, is a 66 kDa intermediate filament protein which is involved in the morphogenesis of neurons. INA is mainly expressed in various kinds of central and peripheral neurons from early development and highly expressed in neurodegenerative and neuronal death cells. The MW of INA ranges from 60 kDa in human, pig and mouse to 66 kDa in rat.(PMID: 29940892, 2201753)

Storage

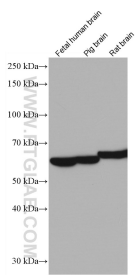
Storage:
Store at -80°C.

Storage Buffer:
PBS Only

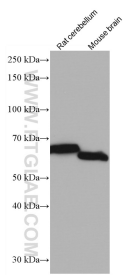
For technical support and original validation data for this product please contact:
T: 1 (888) 4PTGLAB (1-888-478-4522) (toll free in USA), or 1(312) 455-8498 (outside USA)
E: proteintech@ptglab.com
W: ptglab.com

This product is exclusively available under Proteintech Group brand and is not available to purchase from any other manufacturer.

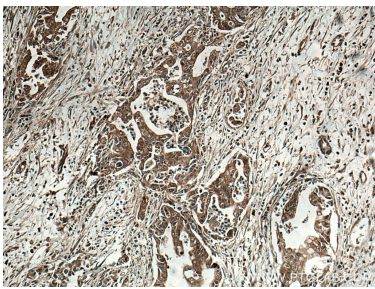
Selected Validation Data



Various lysates were subjected to SDS PAGE followed by western blot with 67120-1-Ig (INA antibody) at dilution of 1:3000 incubated at room temperature for 1.5 hours. This data was developed using the same antibody clone with 67120-1-PBS in a different storage buffer formulation.



Various lysates were subjected to SDS PAGE followed by western blot with 67120-1-Ig (INA antibody) at dilution of 1:3000 incubated at room temperature for 1.5 hours. This data was developed using the same antibody clone with 67120-1-PBS in a different storage buffer formulation.



Immunohistochemical analysis of paraffin-embedded human pancreas cancer tissue slide using 67120-1-Ig (INA antibody) at dilution of 1:600 (under 10x lens. Heat mediated antigen retrieval with Tris-EDTA buffer (pH 9.0). This data was developed using the same antibody clone with 67120-1-PBS in a different storage buffer formulation.