

For Research Use Only

EHF Monoclonal antibody

Catalog Number: 67125-1-Ig

Featured Product

1 Publications



Basic Information

Catalog Number:

67125-1-Ig

Size:

150ul , Concentration: 1000 ug/ml by Bradford method using BSA as the standard;

Source:

Mouse

Isotype:

IgG2a

Immunogen Catalog Number:

AG28769

GenBank Accession Number:

BC038995

GeneID (NCBI):

26298

UNIPROT ID:

Q9NZC4

Full Name:

ets homologous factor

Calculated MW:

35 kDa

Observed MW:

35 kDa

Purification Method:

Protein A purification

CloneNo.:

1C12E4

Recommended Dilutions:

WB 1:1000-1:6000

Applications

Tested Applications:

WB, ELISA

Cited Applications:

IHC

Species Specificity:

Human

Cited Species:

human

Positive Controls:

WB : LNCaP cells, human brain tissue, A431 cells, NCCIT cell, T-47D cells

Notable Publications

Author	Pubmed ID	Journal	Application
Junqiang Li	33520362	Am J Cancer Res	IHC

Storage

Storage:

Store at -20°C.

Storage Buffer:

PBS with 0.02% sodium azide and 50% glycerol pH 7.3.

Aliquoting is unnecessary for -20°C storage

*** 20ul sizes contain 0.1% BSA

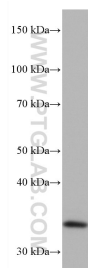
For technical support and original validation data for this product please contact:

T: 1 (888) 4PTGLAB (1-888-478-4522) (toll free in USA), or 1(312) 455-8498 (outside USA)

E: proteintech@ptglab.com
W: ptglab.com

This product is exclusively available under Proteintech Group brand and is not available to purchase from any other manufacturer.

Selected Validation Data



LNCaP cells were subjected to SDS PAGE followed by western blot with 67125-1-Ig (EHF antibody) at dilution of 1:3000 incubated at room temperature for 1.5 hours.