

For Research Use Only

FSH beta Monoclonal antibody

Catalog Number:67131-1-Ig



Basic Information

Catalog Number: 67131-1-Ig	GenBank Accession Number: BC113488	Purification Method: Protein A purification
Size: 150ul , Concentration: 2100 ug/ml by Nanodrop and 1000 ug/ml by Bradford method using BSA as the standard;	GeneID (NCBI): 2488	CloneNo.: 1B10A11
Source: Mouse	UNIPROT ID: P01225	Recommended Dilutions: IHC 1:500-1:2000 IF/ICC 1:200-1:800
Isotype: IgG2b	Full Name: follicle stimulating hormone, beta polypeptide	
Immunogen Catalog Number: AG13788	Calculated MW: 129 aa, 15 kDa	

Applications

Tested Applications: IHC, IF/ICC, ELISA	Positive Controls:
Species Specificity: human	IHC : human pituitary tissue, human pituitary adenoma tissue
Note-IHC: suggested antigen retrieval with TE buffer pH 9.0; (*) Alternatively, antigen retrieval may be performed with citrate buffer pH 6.0	IF/ICC : HepG2 cells,

Background Information

The FSHB gene encodes the beta subunit of follicle-stimulating hormone (FSH), particularly expressed in gonadotroph cells within the anterior pituitary gland and plays a critical role in the regulation of gonadal function, pubertal maturation and reproductive processes in mammals. The transcription of the FSHB gene is critical for the production of the FSH hormone(PMID:28281143). And FSH is required for ovarian folliculogenesis in females, in males it promotes spermatogenesis in conjunction with testosterone(PMID:11739331). Mutations in FSHB gene would result in infertility both in men and women (PMID: 23766128).

Storage

Storage:
Store at -20°C. Stable for one year after shipment.
Storage Buffer:
PBS with 0.02% sodium azide and 50% glycerol, pH7.3
Aliquoting is unnecessary for -20°C storage

*** 20ul sizes contain 0.1% BSA

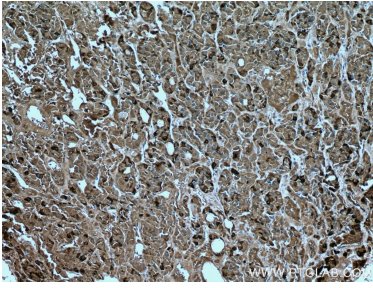
For technical support and original validation data for this product please contact:

T: 1 (888) 4PTGLAB (1-888-478-4522) (toll free
in USA), or 1(312) 455-8498 (outside USA)

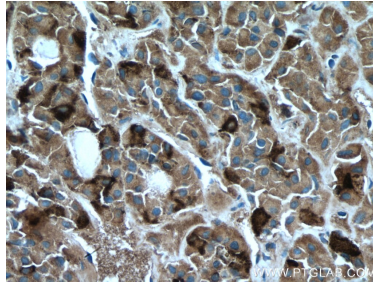
E: proteintech@ptglab.com
W: ptglab.com

This product is exclusively available under Proteintech Group brand and is not available to purchase from any other manufacturer.

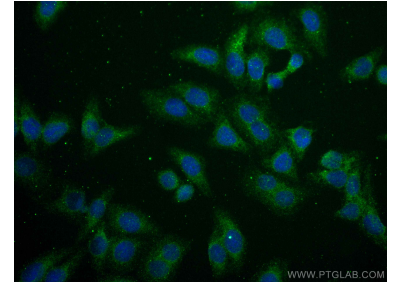
Selected Validation Data



Immunohistochemical analysis of paraffin-embedded human pituitary tissue slide using 67131-1-Ig (FSH beta antibody) at dilution of 1:1000 (under 10x lens. Heat mediated antigen retrieval with Tris-EDTA buffer (pH 9.0).



Immunohistochemical analysis of paraffin-embedded human pituitary tissue slide using 67131-1-Ig (FSHB antibody) at dilution of 1:1000 (under 40x lens. Heat mediated antigen retrieval with Tris-EDTA buffer (pH 9.0).



Immunofluorescent analysis of (-20°C Ethanol) fixed HepG2 cells using FSH beta antibody (67131-1-Ig, Clone: 1B10A11) at dilution of 1:400 and CoraLite@488-Conjugated AffiniPure Goat Anti-Mouse IgG(H+L).