

For Research Use Only

FSH beta Monoclonal antibody, PBS Only

Catalog Number: 67131-1-PBS



Basic Information

Catalog Number: 67131-1-PBS	GenBank Accession Number: BC113488	Purification Method: Protein A purification
Size: 100ug , Concentration: 1mg/ml by Nanodrop;	GeneID (NCBI): 2488	CloneNo.: 1B10A11
Source: Mouse	UNIPROT ID: P01225	
Isotype: IgG2b	Full Name: follicle stimulating hormone, beta polypeptide	
Immunogen Catalog Number: AG13788	Calculated MW: 129 aa, 15 kDa	

Applications

Tested Applications:
IHC, IF/ICC, Indirect ELISA

Species Specificity:
human

Background Information

The FSHB gene encodes the beta subunit of follicle-stimulating hormone (FSH), particularly expressed in gonadotroph cells within the anterior pituitary gland and plays a critical role in the regulation of gonadal function, pubertal maturation and reproductive processes in mammals. The transcription of the FSHB gene is critical for the production of the FSH hormone(PMID:28281143). And FSH is required for ovarian folliculogenesis in females, in males it promotes spermatogenesis in conjunction with testosterone(PMID:11739331). Mutations in FSHB gene would result in infertility both in men and women (PMID: 23766128).

Storage

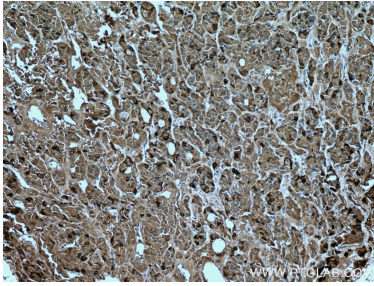
Storage:
Store at -80°C.

Storage Buffer:
PBS only, pH7.3

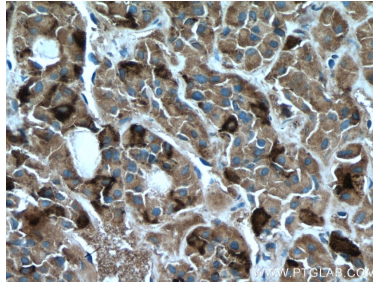
For technical support and original validation data for this product please contact:
T: 1 (888) 4PTGLAB (1-888-478-4522) (toll free in USA), or 1(312) 455-8498 (outside USA)
E: proteintech@ptglab.com
W: ptglab.com

This product is exclusively available under Proteintech Group brand and is not available to purchase from any other manufacturer.

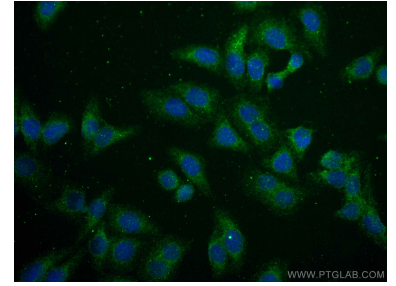
Selected Validation Data



Immunohistochemical analysis of paraffin-embedded human pituitary tissue slide using 67131-1-Ig (FSH beta antibody) at dilution of 1:1000 (under 10x lens. Heat mediated antigen retrieval with Tris-EDTA buffer (pH 9.0). This data was developed using the same antibody clone with 67131-1-PBS in a different storage buffer formulation.



Immunohistochemical analysis of paraffin-embedded human pituitary tissue slide using 67131-1-Ig (FSHB antibody) at dilution of 1:1000 (under 40x lens. Heat mediated antigen retrieval with Tris-EDTA buffer (pH 9.0). This data was developed using the same antibody clone with 67131-1-PBS in a different storage buffer formulation.



Immunofluorescent analysis of (-20°C Ethanol) fixed HepG2 cells using FSH beta antibody (67131-1-Ig, Clone: 1B10A11) at dilution of 1:400 and CoraLite®488-Conjugated AffiniPure Goat Anti-Mouse IgG(H+L). This data was developed using the same antibody clone with 67131-1-PBS in a different storage buffer formulation.