

For Research Use Only

Ninein Monoclonal antibody

Catalog Number: 67132-1-Ig

Featured Product

3 Publications



Basic Information

Catalog Number:

67132-1-Ig

Size:

150ul, Concentration: 2100 ug/ml by Nanodrop and 1000 ug/ml by Bradford method using BSA as the standard;

Source:

Mouse

Isotype:

IgG1

Immunogen Catalog Number:

AG14652

GenBank Accession Number:

BC034708

GeneID (NCBI):

51199

UNIPROT ID:

Q8N4C6

Full Name:

ninein (GSK3B interacting protein)

Calculated MW:

2090 aa, 243 kDa

Observed MW:

220 kDa

Purification Method:

Protein G purification

CloneNo.:

1B10A8

Recommended Dilutions:

WB: 1:2000-1:10000

IHC: 1:250-1:1000

IF/ICC: 1:250-1:1000

Applications

Tested Applications:

WB, IHC, IF/ICC, ELISA

Cited Applications:

WB, IF

Species Specificity:

human, mouse, canine

Cited Species:

human

Note-IHC: suggested antigen retrieval with TE buffer pH 9.0; (*) Alternatively, antigen retrieval may be performed with citrate buffer pH 6.0

Positive Controls:

WB: HeLa cells, MCF-7 cells, NCCIT cells, HT-29 cells

IHC: mouse brain tissue, mouse heart tissue

IF/ICC: MDCK cells,

Background Information

Ninein is a large coiled-coil protein that associates with the subdistal appendages of the mother centriole and the minus-ends of both centrioles. Ninein interacts with γ -tubulin and microtubule nucleation and anchoring at the centrosomes.

Notable Publications

Author	Pubmed ID	Journal	Application
Johannes F Weijman	38533689	J Cell Sci	IF
Sarah Carden	37852252	Dev Cell	WB,IF
Cayla E Jewett	36656118	Elife	IF

Storage

Storage:

Store at -20°C. Stable for one year after shipment.

Storage Buffer:

PBS with 0.02% sodium azide and 50% glycerol, pH7.3

Aliquoting is unnecessary for -20°C storage

*** 20ul sizes contain 0.1% BSA

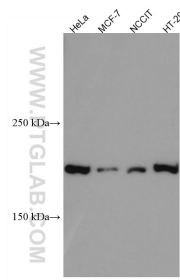
For technical support and original validation data for this product please contact:

T: 1 (888) 4PTGLAB (1-888-478-4522) (toll free in USA), or 1(312) 455-8498 (outside USA)

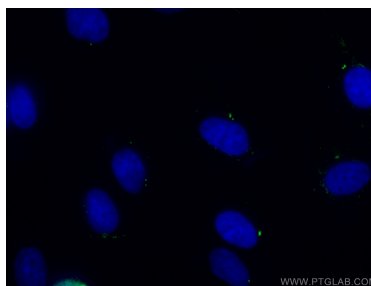
E: proteintech@ptglab.com
W: ptglab.com

This product is exclusively available under Proteintech Group brand and is not available to purchase from any other manufacturer.

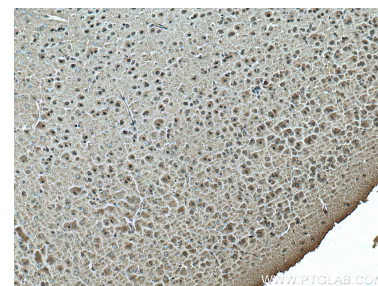
Selected Validation Data



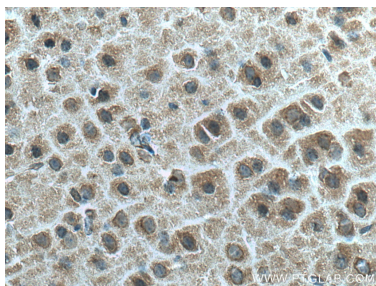
Various lysates were subjected to SDS PAGE followed by western blot with 67132-1-Ig (Ninein antibody) at dilution of 1:5000 incubated at room temperature for 1.5 hours.



Immunofluorescent analysis of (-20°C Ethanol) fixed MDCK cells using 67132-1-Ig (Ninein antibody) at dilution of 1:500 and CoraLite488-Conjugated AffiniPure Goat Anti-Mouse IgG(H+L).



Immunohistochemical analysis of paraffin-embedded mouse brain tissue slide using 67132-1-Ig (Ninein antibody) at dilution of 1:500 (under 10x lens). Heat mediated antigen retrieval with Tris-EDTA buffer (pH 9.0).



Immunohistochemical analysis of paraffin-embedded mouse brain tissue slide using 67132-1-Ig (Ninein antibody) at dilution of 1:500 (under 40x lens). Heat mediated antigen retrieval with Tris-EDTA buffer (pH 9.0).