

For Research Use Only

# TRIM21 Monoclonal antibody

Catalog Number: 67136-1-Ig

Featured Product

13 Publications



## Basic Information

Catalog Number: 67136-1-Ig	GenBank Accession Number: BC010861	Purification Method: Protein G purification
Size: 150ul , Concentration: 2000 ug/ml by Nanodrop;	GeneID (NCBI): 6737	CloneNo.: 1E8B9
Source: Mouse	UNIPROT ID: P19474	Recommended Dilutions: WB 1:2000-1:10000 IHC 1:250-1:1000 IF/ICC 1:400-1:1600
Isotype: IgG1	Full Name: tripartite motif-containing 21	
Immunogen Catalog Number: AG28377	Calculated MW: 475 aa, 54 kDa	
	Observed MW: 42-54 kDa	

## Applications

Tested Applications: WB, IHC, IF/ICC, ELISA	Positive Controls:
Cited Applications: WB, IHC, IF, IP, CoIP	WB : HeLa cells, HL-60 cells, HSC-T6 cells, Jurkat cells, NIH/3T3 cells, NCI-H1299 cells, HepG2 cells, PC-12 cells
Species Specificity: human, mouse, rat	IHC : human breast cancer tissue, human pancreas cancer tissue
Cited Species: human, mouse, rat	IF/ICC : HepG2 cells,
<b>Note-IHC: suggested antigen retrieval with TE buffer pH 9.0; (*) Alternatively, antigen retrieval may be performed with citrate buffer pH 6.0</b>	

## Background Information

TRIM21 has multiple N-terminal zinc finger motifs(has E3 ligase activity), a central leucine zipper, and a potential N-glycosylation site. TRIM21 is a E3 ubiquitin-protein ligase. It can form a ubiquitin ligase complex with E2 UBE2D2, which function not only for the ubiquitination of USP4 and IKBKB but also for its self-ubiquitination. It has a role in the regulation of the cell cycle progression and could enhance the decapping activity of DCP2. It can exist in all mammalian cells as a ribonucleoprotein particle , which composed of a single polypeptide and 1 of 4 small RNA molecules. TRIM21 exists various isoforms and range molecular weight of isoforms is about 42-45kDa and 49-54 kDa.

## Notable Publications

Author	Pubmed ID	Journal	Application
Xiaofan Feng	34921137	Cell Death Dis	WB,IP
Yahong Fu	34929478	Int Immunopharmacol	WB
Eduardo Gomez-Bañuelos	36040804	JCI Insight	WB

## Storage

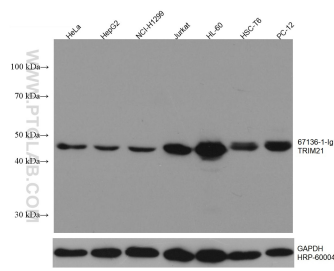
Storage:  
Store at -20°C. Stable for one year after shipment.  
Storage Buffer:  
PBS with 0.02% sodium azide and 50% glycerol, pH7.3  
Aliquoting is unnecessary for -20°C storage

\*\*\* 20ul sizes contain 0.1% BSA

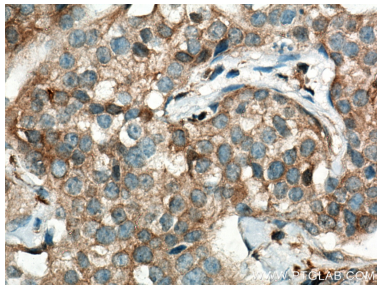
For technical support and original validation data for this product please contact:  
T: 1 (888) 4PTGLAB (1-888-478-4522) (toll free in USA), or 1(312) 455-8498 (outside USA)  
E: proteintech@ptglab.com  
W: ptglab.com

This product is exclusively available under Proteintech Group brand and is not available to purchase from any other manufacturer.

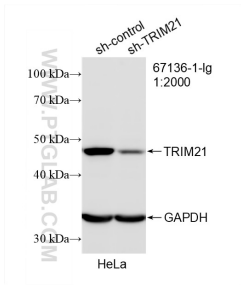
Selected Validation Data



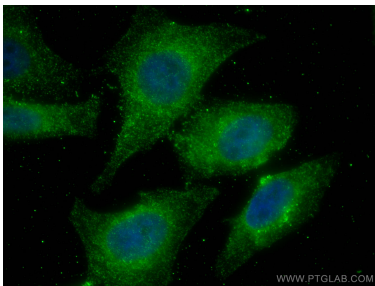
Various lysates were subjected to SDS PAGE followed by western blot with 67136-1-Ig (TRIM21 antibody) at dilution of 1:5000 incubated at room temperature for 1.5 hours. The membrane was stripped and reblotted with HRP-conjugated GAPDH Monoclonal antibody (HRP-60004) as loading control.



Immunohistochemical analysis of paraffin-embedded human breast cancer tissue slide using 67136-1-Ig (TRIM21 antibody) at dilution of 1:500 (under 40x lens). Heat mediated antigen retrieval with Tris-EDTA buffer (pH 9.0).



WB result of TRIM21 antibody (67136-1-Ig; 1:2000; incubated at room temperature for 1.5 hours) with sh-Control and sh-TRIM21 transfected HeLa cells.



Immunofluorescent analysis of (4% PFA) fixed HepG2 cells using TRIM21 antibody (67136-1-Ig, Clone: 1E8B9 ) at dilution of 1:800 and CoraLite®488-Conjugated AffiniPure Goat Anti-Mouse IgG(H+L).