

For Research Use Only

LOXL2 Monoclonal antibody

Catalog Number: 67139-1-Ig **5 Publications**



Basic Information

Catalog Number: 67139-1-Ig	GenBank Accession Number: BC000594	Purification Method: Protein A purification
Size: 150ul , Concentration: 2000 µg/ml by Nanodrop and 1000 µg/ml by Bradford method using BSA as the standard;	GeneID (NCBI): 4017	CloneNo.: 1H7F1
Source: Mouse	UNIPROT ID: Q9Y4K0	Recommended Dilutions: WB 1:1000-1:4000 IHC 1:4000-1:16000 IF/ICC 1:50-1:500
Isotype: IgG2a	Full Name: lysyl oxidase-like 2	
Immunogen Catalog Number: AG28566	Calculated MW: 774 aa, 87 kDa	
	Observed MW: 100 kDa	

Applications

Tested Applications: WB, IF, IHC, ELISA	Positive Controls: WB : A549 cells, human placenta tissue, A375 cells, human heart tissue IHC : rat colon tissue, IF/ICC : HepG2 cells,
Cited Applications: WB, IF	
Species Specificity: Human, rat	
Cited Species: human, mouse	
Note-IHC: suggested antigen retrieval with TE buffer pH 9.0; (*) Alternatively, antigen retrieval may be performed with citrate buffer pH 6.0	

Background Information

LOXL2, also named as W59-14, belongs to an amine oxidase family whose members have been implicated in crosslink formation in stromal collagens and elastin, cell motility, and tumor development and progression. LOXL2 activity might be a crucial modulator of Snail, providing an additional control mechanism of EMT and tumor progression. Increased LOXL2 expression in colon and esophageal cancer may contribute to tumor progression. We detected a band about 100 kd which is a secretory mature LOXL2 protein modified by glycosylation (PMID: 24014025).

Notable Publications

Author	Pubmed ID	Journal	Application
Yongxin Wu	35712918	Aging Cell	WB
Yuan Xie	39191260	Neuron	IF
Yingzhi Shen	39145451	J Clin Invest	

Storage

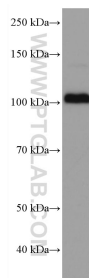
Storage:
Store at -20°C. Stable for one year after shipment.
Storage Buffer:
PBS with 0.02% sodium azide and 50% glycerol pH 7.3.
Aliquoting is unnecessary for -20°C storage

*** 20ul sizes contain 0.1% BSA

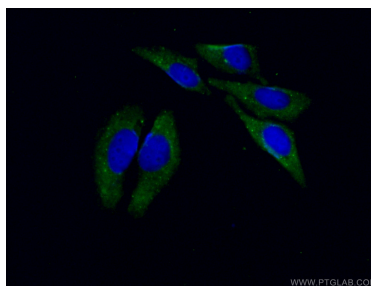
For technical support and original validation data for this product please contact:
T: 1 (888) 4PTGLAB (1-888-478-4522) (toll free in USA), or 1(312) 455-8498 (outside USA)
E: proteintech@ptglab.com
W: ptglab.com

This product is exclusively available under Proteintech Group brand and is not available to purchase from any other manufacturer.

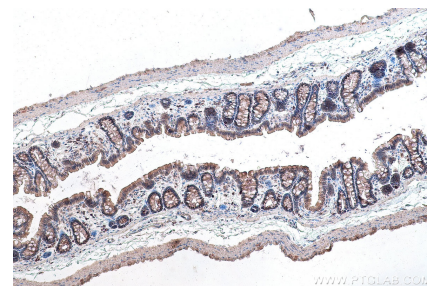
Selected Validation Data



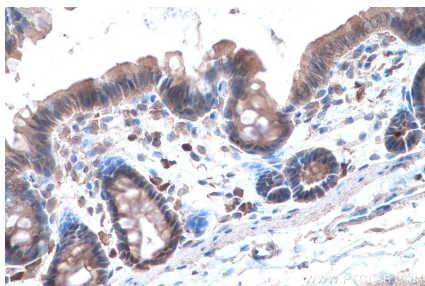
A549 cells were subjected to SDS PAGE followed by western blot with 67139-1-Ig (LOXL2 antibody) at dilution of 1:2000 incubated at room temperature for 1.5 hours.



Immunofluorescent analysis of (-20°C Ethanol) fixed HepG2 cells using 67139-1-Ig (LOXL2 antibody) at dilution of 1:100 and CoraLite488-Conjugated Goat Anti-Mouse IgG(H+L).



Immunohistochemical analysis of paraffin-embedded rat colon tissue slide using 67139-1-Ig (LOXL2 antibody) at dilution of 1:8000 (under 10x lens). Heat mediated antigen retrieval with Tris-EDTA buffer (pH 9.0).



Immunohistochemical analysis of paraffin-embedded rat colon tissue slide using 67139-1-Ig (LOXL2 antibody) at dilution of 1:8000 (under 40x lens). Heat mediated antigen retrieval with Tris-EDTA buffer (pH 9.0).