

For Research Use Only

CDC25B Monoclonal antibody

Catalog Number: 67145-1-Ig 1 Publications



Basic Information

| | | |
|--|---|---|
| Catalog Number: 67145-1-Ig | GenBank Accession Number: BC006395 | Purification Method: Protein A purification |
| Size: 150ul , Concentration: 1600 ug/ml by 994 Nanodrop and 1000 ug/ml by Bradford method using BSA as the standard; | GeneID (NCBI): P30305 | CloneNo.: 1H3A4 |
| Source: Mouse | UNIPROT ID: P30305 | Recommended Dilutions: WB 1:5000-1:50000 IHC 1:1000-1:4000 IF/ICC 1:200-1:800 |
| Isotype: IgG2b | Full Name: cell division cycle 25 homolog B (S. pombe) | |
| Immunogen Catalog Number: AG27193 | Calculated MW: 65 kDa | |
| | Observed MW: 69 kDa | |

Applications

| | |
|--|---|
| Tested Applications: WB, IHC, IF/ICC, ELISA | Positive Controls: WB : Sp2/O cells, Jurkat cells, U-937 cells IHC : human skin cancer tissue, IF/ICC : Jurkat cells, |
| Cited Applications: WB, IF | |
| Species Specificity: human, mouse | |
| Cited Species: human, mouse | |
| Note-IHC: suggested antigen retrieval with TE buffer pH 9.0; (*) Alternatively, antigen retrieval may be performed with citrate buffer pH 6.0 | |

Background Information

CDC25B, also named as CDC25HU2, belongs to the MPI phosphatase family. It is a tyrosine protein phosphatase which functions as a dosage-dependent inducer of mitotic progression. CDC25B directly dephosphorylates CDK1 and stimulates its kinase activity. The three isoforms seem to have a different level of activity.

Notable Publications

| Author | Pubmed ID | Journal | Application |
|----------|-----------|------------|-------------|
| Zhuo Han | 39406751 | Nat Commun | WB,IF |

Storage

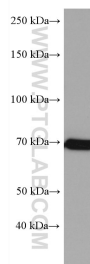
Storage:
Store at -20°C. Stable for one year after shipment.
Storage Buffer:
PBS with 0.02% sodium azide and 50% glycerol pH 7.3.
Aliquoting is unnecessary for -20°C storage

*** 20ul sizes contain 0.1% BSA

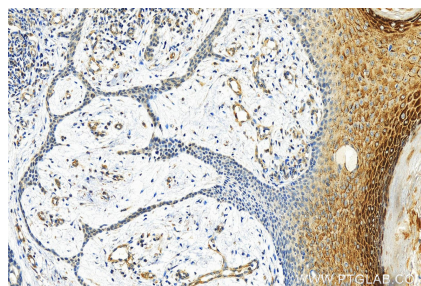
For technical support and original validation data for this product please contact:
T: 1 (888) 4PTGLAB (1-888-478-4522) (toll free in USA), or 1(312) 455-8498 (outside USA)
E: proteintech@ptglab.com
W: ptglab.com

This product is exclusively available under Proteintech Group brand and is not available to purchase from any other manufacturer.

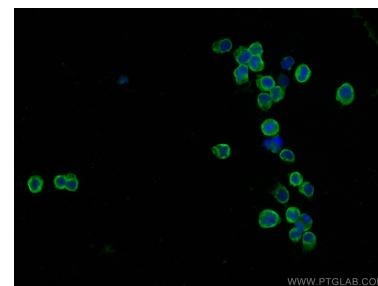
Selected Validation Data



Sp2/0 cells were subjected to SDS PAGE followed by western blot with 67145-1-Ig (CDC25B antibody) at dilution of 1:10000 incubated at room temperature for 1.5 hours.



Immunohistochemical analysis of paraffin-embedded skin cancer slide using 67145-1-Ig (CDC25B antibody) at dilution of 1:2000 (under 20x lens). Heat mediated antigen retrieval with Tris-EDTA buffer (pH 9.0).



Immunofluorescent analysis of (4% PFA) fixed Jurkat cells using CDC25B antibody (67145-1-Ig, Clone: 1H3A4) at dilution of 1:400 and CoraLite®488-Conjugated AffiniPure Goat Anti-Mouse IgG(H+L).