

For Research Use Only

# TROVE2 Monoclonal antibody

Catalog Number: 67149-1-Ig



## Basic Information

<b>Catalog Number:</b> 67149-1-Ig	<b>GenBank Accession Number:</b> BC036658	<b>Purification Method:</b> Protein A purification
<b>Size:</b> 150ul , Concentration: 1800 µg/ml by Nanodrop and 1000 µg/ml by Bradford method using BSA as the standard;	<b>GeneID (NCBI):</b> 6738	<b>CloneNo.:</b> 2A4E5
<b>Source:</b> Mouse	<b>Full Name:</b> TROVE domain family, member 2	<b>Recommended Dilutions:</b> WB 1:5000-1:50000 IHC 1:1000-1:4000
<b>Isotype:</b> IgG2a	<b>Calculated MW:</b> 60 kDa	
<b>Immunogen Catalog Number:</b> AG4379	<b>Observed MW:</b> 60 kDa	

## Applications

### Tested Applications:

IHC, WB, ELISA

### Species Specificity:

Human, Mouse, Rat

**Note-IHC: suggested antigen retrieval with  
TE buffer pH 9.0; (\*) Alternatively, antigen  
retrieval may be performed with citrate  
buffer pH 6.0**

### Positive Controls:

WB : HeLa cells, MCF-7 cells, Jurkat cells, HEK-293 cells

IHC : mouse brain tissue,

## Background Information

TROVE2, also named as RO60 or RoRNP, is a 538 amino acid protein, which is localized in cytoplasmic mRNP granules containing untranslated mRNAs. TROVE2 as a RNA-binding protein that binds to misfolded non-coding RNAs, pre-5S rRNA, and several small cytoplasmic RNA molecules known as Y RNAs. TROVE2 may stabilize some of these RNAs and protect them from degradation (PubMed:18056422). TROVE2 binds to endogenous Alu retroelements which are induced by type I IFN and stimulate proinflammatory cytokine secretion.

## Storage

### Storage:

Store at -20°C.

### Storage Buffer:

PBS with 0.02% sodium azide and 50% glycerol pH 7.3.

Aliquoting is unnecessary for -20°C storage

\*\*\* 20ul sizes contain 0.1% BSA

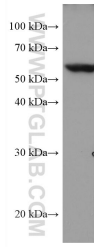
For technical support and original validation data for this product please contact:

T: 1 (888) 4PTGLAB (1-888-478-4522) (toll free  
in USA), or 1(312) 455-8498 (outside USA)

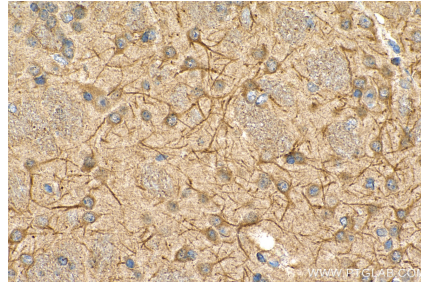
E: proteintech@ptglab.com  
W: ptglab.com

This product is exclusively available under Proteintech Group brand and is not available to purchase from any other manufacturer.

## Selected Validation Data



HeLa cells were subjected to SDS PAGE followed by western blot with 67149-1-Ig (TROVE2 antibody) at dilution of 1:10000 incubated at room temperature for 1.5 hours.



Immunohistochemical analysis of paraffin-embedded mouse brain tissue slide using 67149-1-Ig (TROVE2 antibody) at dilution of 1:2000 (under 40x lens). Heat mediated antigen retrieval with Tris-EDTA buffer (pH 9.0).