

FXYD1 Monoclonal antibody

Catalog Number: 67150-1-Ig

Basic Information

Catalog Number: 67150-1-Ig	GenBank Accession Number: BC032800	Purification Method: Protein A purification
Size: 150ul , Concentration: 1600 ug/ml by Nanodrop and 1000 ug/ml by Bradford method using BSA as the standard;	GeneID (NCBI): 5348	CloneNo.: 2C10G9
Source: Mouse	UNIPROT ID: O00168	Recommended Dilutions: WB 1:1000-1:4000 IHC 1:50-1:500 IF-P 1:200-1:800
Isotype: IgG2a	Full Name: FXYD domain containing ion transport regulator 1	
Immunogen Catalog Number: AG25307	Calculated MW: 92 aa, 10 kDa	
	Observed MW: 15 kDa	

Applications

Tested Applications: WB, IHC, IF-P, ELISA	Positive Controls:
Species Specificity: Human, Pig, mouse	WB : human heart tissue, human skeletal muscle tissue, pig heart tissue
Note-IHC: suggested antigen retrieval with TE buffer pH 9.0; (*) Alternatively, antigen retrieval may be performed with citrate buffer pH 6.0	IHC : human heart tissue, IF-P : mouse heart tissue,

Background Information

FXYD1, also named as PLM and Phospholemman, belongs to the FXYD family. FXYD1 induces a hyperpolarization-activated chloride current when expressed in *Xenopus* oocytes. It may have a functional role in muscle contraction. FXYD1 is a partner protein and regulator of the Na⁺,K⁺-ATPase (Na⁺,K⁺-pump). It may play a role in the acute regulation of the Na⁺,K⁺-ATPase response to exercise. (PMID: 20595385, 21653224)

Storage

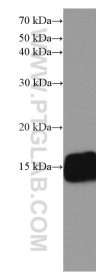
Storage:
Store at -20°C.
Storage Buffer:
PBS with 0.02% sodium azide and 50% glycerol pH 7.3.
Aliquoting is unnecessary for -20°C storage

*** 20ul sizes contain 0.1% BSA

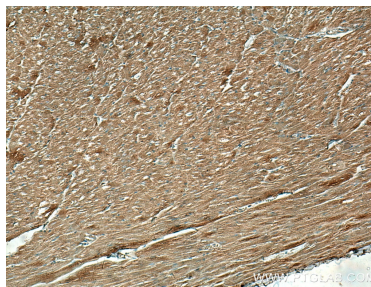
For technical support and original validation data for this product please contact:
T: 1 (888) 4PTGLAB (1-888-478-4522) (toll free in USA), or 1(312) 455-8498 (outside USA)
E: proteintech@ptglab.com
W: ptglab.com

This product is exclusively available under Proteintech Group brand and is not available to purchase from any other manufacturer.

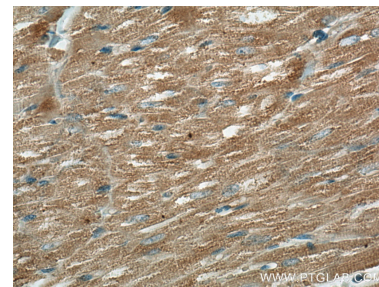
Selected Validation Data



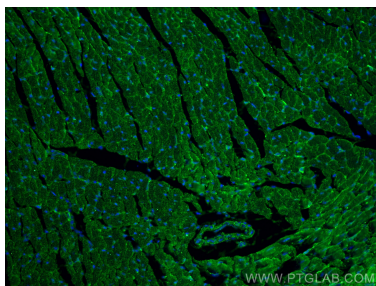
human heart tissue were subjected to SDS PAGE followed by western blot with 67150-1-Ig (FXVD1 antibody) at dilution of 1:2000 incubated at room temperature for 1.5 hours.



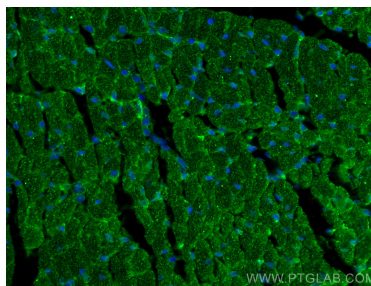
Immunohistochemical analysis of paraffin-embedded human heart tissue slide using 67150-1-Ig (FXVD1 antibody) at dilution of 1:200 (under 10x lens). Heat mediated antigen retrieval with Tris-EDTA buffer (pH 9.0).



Immunohistochemical analysis of paraffin-embedded human heart tissue slide using 67150-1-Ig (FXVD1 antibody) at dilution of 1:200 (under 40x lens). Heat mediated antigen retrieval with Tris-EDTA buffer (pH 9.0).



Immunofluorescent analysis of (4% PFA) fixed mouse heart tissue using FXVD1 antibody (67150-1-Ig, Clone: 2C10G9) at dilution of 1:400 and CoraLite®488-Conjugated Goat Anti-Mouse IgG(H+L).



Immunofluorescent analysis of (4% PFA) fixed mouse heart tissue using FXVD1 antibody (67150-1-Ig, Clone: 2C10G9) at dilution of 1:400 and CoraLite®488-Conjugated Goat Anti-Mouse IgG(H+L).