

For Research Use Only

# FXYD1 Monoclonal antibody, PBS Only



Catalog Number: 67150-1-PBS

## Basic Information

<b>Catalog Number:</b> 67150-1-PBS	<b>GenBank Accession Number:</b> BC032800	<b>Purification Method:</b> Protein A purification
<b>Size:</b> 100ug , Concentration: 1 mg/ml by Nanodrop;	<b>GeneID (NCBI):</b> 5348	<b>CloneNo.:</b> 2C10G9
<b>Source:</b> Mouse	<b>UNIPROT ID:</b> O00168	
<b>Isotype:</b> IgG2a	<b>Full Name:</b> FXYD domain containing ion transport regulator 1	
<b>Immunogen Catalog Number:</b> AG25307	<b>Calculated MW:</b> 92 aa, 10 kDa	
	<b>Observed MW:</b> 15 kDa	

## Applications

**Tested Applications:**  
WB, IF, IHC, Indirect ELISA

**Species Specificity:**  
Human, Pig, mouse

## Background Information

FXYD1, also named as PLM and Phospholemman, belongs to the FXYD family. FXYD1 induces a hyperpolarization-activated chloride current when expressed in *Xenopus* oocytes. It may have a functional role in muscle contraction. FXYD1 is a partner protein and regulator of the Na<sup>+</sup>,K<sup>+</sup>-ATPase (Na<sup>+</sup>,K<sup>+</sup>-pump). It may play a role in the acute regulation of the Na<sup>+</sup>,K<sup>+</sup>-ATPase response to exercise. (PMID: 20595385, 21653224)

## Storage

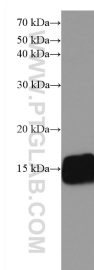
**Storage:**  
Store at -80°C.

**Storage Buffer:**  
PBS Only

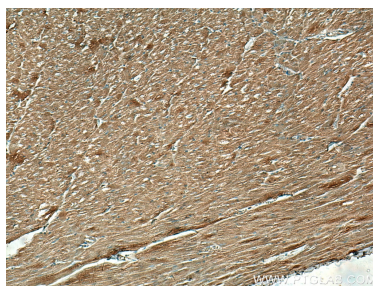
For technical support and original validation data for this product please contact:  
T: 1 (888) 4PTGLAB (1-888-478-4522) (toll free in USA), or 1(312) 455-8498 (outside USA)  
E: [proteintech@ptglab.com](mailto:proteintech@ptglab.com)  
W: [ptglab.com](http://ptglab.com)

This product is exclusively available under Proteintech Group brand and is not available to purchase from any other manufacturer.

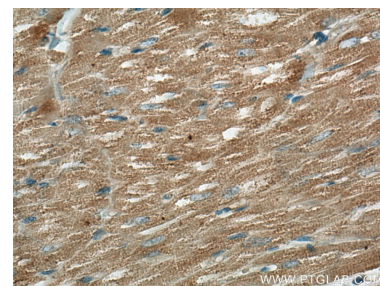
## Selected Validation Data



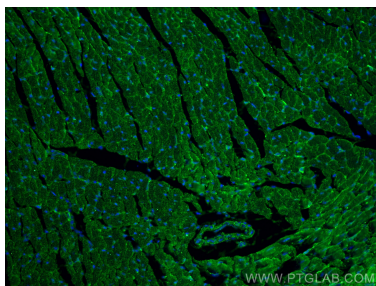
human heart tissue were subjected to SDS PAGE followed by western blot with 67150-1-Ig (FXVD1 antibody) at dilution of 1:2000 incubated at room temperature for 1.5 hours. This data was developed using the same antibody clone with 67150-1-PBS in a different storage buffer formulation.



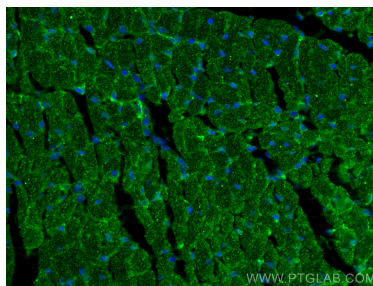
Immunohistochemical analysis of paraffin-embedded human heart tissue slide using 67150-1-Ig (FXVD1 antibody) at dilution of 1:200 (under 10x lens). Heat mediated antigen retrieval with Tris-EDTA buffer (pH 9.0). This data was developed using the same antibody clone with 67150-1-PBS in a different storage buffer formulation.



Immunohistochemical analysis of paraffin-embedded human heart tissue slide using 67150-1-Ig (FXVD1 antibody) at dilution of 1:200 (under 40x lens). Heat mediated antigen retrieval with Tris-EDTA buffer (pH 9.0). This data was developed using the same antibody clone with 67150-1-PBS in a different storage buffer formulation.



Immunofluorescent analysis of (4% PFA) fixed mouse heart tissue using FXVD1 antibody (67150-1-Ig, Clone: 2C10G9) at dilution of 1:400 and CoraLite®488-Conjugated AffiniPure Goat Anti-Mouse IgG(H+L). This data was developed using the same antibody clone with 67150-1-PBS in a different storage buffer formulation.



Immunofluorescent analysis of (4% PFA) fixed mouse heart tissue using FXVD1 antibody (67150-1-Ig, Clone: 2C10G9) at dilution of 1:400 and CoraLite®488-Conjugated AffiniPure Goat Anti-Mouse IgG(H+L). This data was developed using the same antibody clone with 67150-1-PBS in a different storage buffer formulation.