

For Research Use Only

FGL2 Monoclonal antibody

Catalog Number: 67152-1-Ig **2 Publications**



Basic Information

Catalog Number: 67152-1-Ig	GenBank Accession Number: BC017813	Purification Method: Protein A purification
Size: 150ul , Concentration: 1700 ug/ml by Nanodrop and 1000 ug/ml by Bradford method using BSA as the standard;	GeneID (NCBI): 10875	CloneNo.: 2C9C5
Source: Mouse	UNIPROT ID: Q14314	Recommended Dilutions: WB 1:2000-1:10000 IF-P 1:200-1:800
Isotype: IgG2b	Full Name: fibrinogen-like 2	
Immunogen Catalog Number: AG28619	Calculated MW: 50 kDa	
	Observed MW: 70 kDa	

Applications

Tested Applications: WB, IF-P, ELISA	Positive Controls:
Cited Applications: WB	WB : THP-1 cells, Jurkat cells
Species Specificity: Human, mouse	IF-P : mouse spleen tissue,
Cited Species: human, mouse	

Background Information

FGL2 (fibrinogen like protein 2) is a 70 kDa glycoprotein that belongs to the fibrinogen-related superfamily of proteins which are involved in coagulation, cell adhesion, and transendothelial migration. FGL2 is an important immune regulator of both innate and adaptive response. It is present on the surface of macrophages and endothelial cells, and can be constitutively secreted by CD4+ CD8+ T cell. FGL2 forms a tetrameric complex which is stabilized by interchain disulfide bonds and it exerts immunosuppressive effects on both T cell proliferation and dendritic cell maturation. The protein may play a role in physiologic functions at mucosal sites.

Notable Publications

Author	Pubmed ID	Journal	Application
Tongguan Tian	37938970	Cell Rep	WB
Mingen Lin	37115693	J Clin Invest	WB

Storage

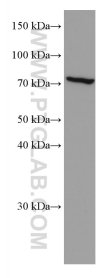
Storage:
Store at -20°C. Stable for one year after shipment.
Storage Buffer:
PBS with 0.02% sodium azide and 50% glycerol pH 7.3.
Aliquoting is unnecessary for -20°C storage

*** 20ul sizes contain 0.1% BSA

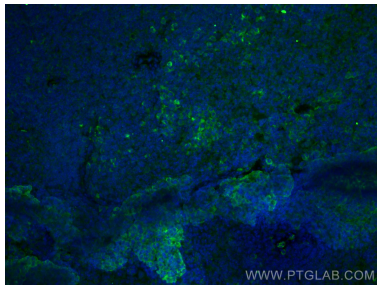
For technical support and original validation data for this product please contact:
T: 1 (888) 4PTGLAB (1-888-478-4522) (toll free in USA), or 1(312) 455-8498 (outside USA)
E: proteintech@ptglab.com
W: ptglab.com

This product is exclusively available under Proteintech Group brand and is not available to purchase from any other manufacturer.

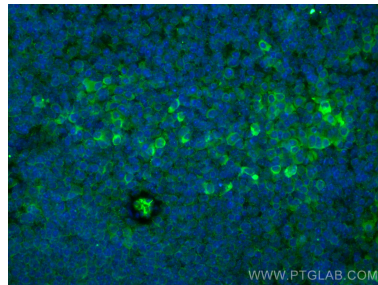
Selected Validation Data



THP-1 cells were subjected to SDS PAGE followed by western blot with 67152-1-Ig (FGL2 antibody) at dilution of 1:5000 incubated at room temperature for 1.5 hours.



Immunofluorescent analysis of (4% PFA) fixed mouse spleen tissue using FGL2 antibody (67152-1-Ig, Clone: 2C9C5) at dilution of 1:400 and CoraLite®488-Conjugated AffiniPure Goat Anti-Mouse IgG(H+L).



Immunofluorescent analysis of (4% PFA) fixed mouse spleen tissue using FGL2 antibody (67152-1-Ig, Clone: 2C9C5) at dilution of 1:400 and CoraLite®488-Conjugated AffiniPure Goat Anti-Mouse IgG(H+L).