

For Research Use Only

# CD138/Syndecan-1 Monoclonal antibody

Catalog Number: 67155-1-Ig **4 Publications**



## Basic Information

<b>Catalog Number:</b> 67155-1-Ig	<b>GenBank Accession Number:</b> BC008765	<b>Purification Method:</b> Protein A purification
<b>Size:</b> 150ul , Concentration: 2108 ug/ml by 6382 Nanodrop and 1000 ug/ml by Bradford method using BSA as the standard;	<b>GeneID (NCBI):</b> 6382	<b>CloneNo.:</b> 4F3A8
<b>Source:</b> Mouse	<b>UNIPROT ID:</b> P18827	<b>Recommended Dilutions:</b> IHC 1:4000-1:16000 IF-P 1:200-1:800
<b>Isotype:</b> IgG2a	<b>Full Name:</b> syndecan 1	
<b>Immunogen Catalog Number:</b> AG0823	<b>Calculated MW:</b> 32.5 kDa	

## Applications

<b>Tested Applications:</b> IHC, IF-P, ELISA	<b>Positive Controls:</b>
<b>Cited Applications:</b> IF	<b>IHC :</b> human tonsillitis tissue, human lymphoma tissue, human ovary tumor tissue
<b>Species Specificity:</b> human	<b>IF-P :</b> human tonsillitis tissue,
<b>Cited Species:</b> human	
<b>Note-IHC: suggested antigen retrieval with TE buffer pH 9.0; (*) Alternatively, antigen retrieval may be performed with citrate buffer pH 6.0</b>	

## Background Information

Syndecan-1 (SDC1), also named CD138, is an integral membrane protein. It participates in cell proliferation, cell migration and cell-matrix interactions via its receptor for extracellular matrix proteins. It is a heparan sulfate proteoglycan expressed on the surface of, and actively shed by, myeloma cells. Altered syndecan-1 expression has been detected in several different tumor types. SDC1 was regarded as a useful marker for labeling normal and neoplastic plasma cells and plasmacytoid lymphomas.

## Notable Publications

Author	Pubmed ID	Journal	Application
Zetian Gong	39974398	Transl Cancer Res	IF
Yanglin Chen	38582082	Dev Cell	IF
Pei-Fen Zhang	36746966	Nat Commun	IF

## Storage

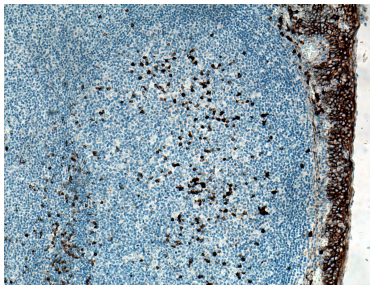
**Storage:**  
Store at -20°C. Stable for one year after shipment.  
**Storage Buffer:**  
PBS with 0.02% sodium azide and 50% glycerol, pH7.3  
Aliquoting is unnecessary for -20°C storage

\*\*\* 20ul sizes contain 0.1% BSA

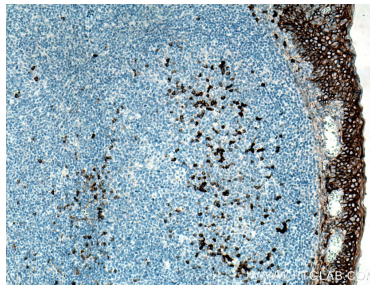
For technical support and original validation data for this product please contact:  
T: 1 (888) 4PTGLAB (1-888-478-4522) (toll free in USA), or 1(312) 455-8498 (outside USA)  
E: proteintech@ptglab.com  
W: ptglab.com

This product is exclusively available under Proteintech Group brand and is not available to purchase from any other manufacturer.

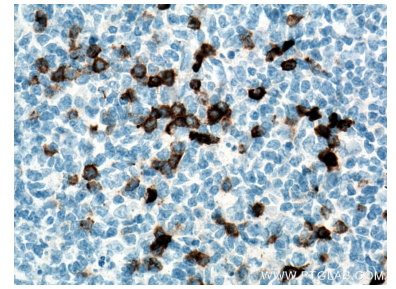
## Selected Validation Data



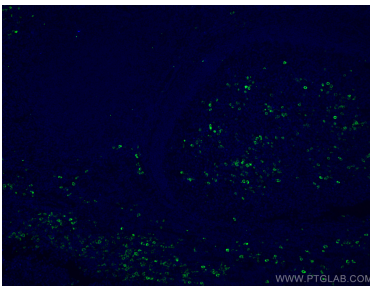
Immunohistochemical analysis of paraffin-embedded human tonsillitis tissue slide using 67155-1-Ig (CD138/Syndecan-1 antibody) at dilution of 1:4000 (under 10x lens). Heat mediated antigen retrieval with Tris-EDTA buffer (pH 9.0).



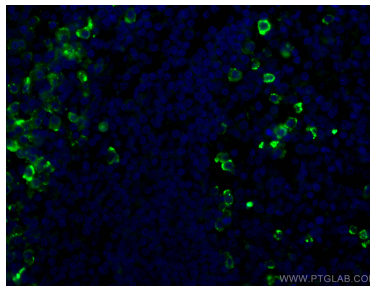
Immunohistochemical analysis of paraffin-embedded human tonsillitis tissue slide using 67155-1-Ig (SDC1,CD138 antibody) at dilution of 1:8000 (under 10x lens). Heat mediated antigen retrieval with Tris-EDTA buffer (pH 9.0).



Immunohistochemical analysis of paraffin-embedded human tonsillitis tissue slide using 67155-1-Ig (SDC1,CD138 antibody) at dilution of 1:8000 (under 40x lens). Heat mediated antigen retrieval with Tris-EDTA buffer (pH 9.0).



Immunofluorescent analysis of (4% PFA) fixed human tonsillitis tissue using CD138/Syndecan-1 antibody (67155-1-Ig, Clone: 4F3A8) at dilution of 1:400 and CoraLite®488-Conjugated AffiniPure Goat Anti-Mouse IgG(H+L).



Immunofluorescent analysis of (4% PFA) fixed human tonsillitis tissue using CD138/Syndecan-1 antibody (67155-1-Ig, Clone: 4F3A8) at dilution of 1:400 and CoraLite®488-Conjugated AffiniPure Goat Anti-Mouse IgG(H+L).