

For Research Use Only

DEFA1 Monoclonal antibody

Catalog Number: 67156-1-Ig



Basic Information

Catalog Number: 67156-1-Ig	GenBank Accession Number: BC093791	Purification Method: Protein A purification
Size: 150ul , Concentration: 2471 ug/ml by Nanodrop and 1000 ug/ml by Bradford method using BSA as the standard;	GeneID (NCBI): 1667	CloneNo.: 1A2B3
Source: Mouse	UNIPROT ID: P59665	Recommended Dilutions: WB 1:1000-1:5000 IHC 1:1000-1:4000 IF-P 1:200-1:800
Isotype: IgG2b	Full Name: defensin, alpha 1	
Immunogen Catalog Number: AG12592	Calculated MW: 94 aa, 10 kDa	
	Observed MW: 6-10 kDa	

Applications

Tested Applications: WB, IHC, IF-P, ELISA	Positive Controls:
Species Specificity: human, mouse	WB : Human peripheral blood leukocyte cells,
Note-IHC: suggested antigen retrieval with TE buffer pH 9.0; (*) Alternatively, antigen retrieval may be performed with citrate buffer pH 6.0	IHC : human small intestine tissue,
	IF-P : mouse spleen tissue,

Storage

Storage:
Store at -20°C. Stable for one year after shipment.
Storage Buffer:
PBS with 0.02% sodium azide and 50% glycerol pH 7.3.
Aliquoting is unnecessary for -20°C storage

*** 20ul sizes contain 0.1% BSA

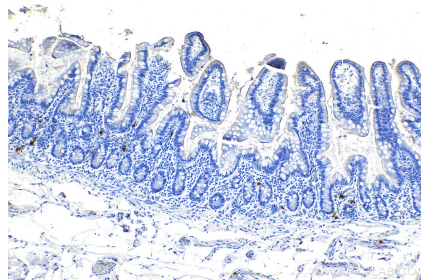
For technical support and original validation data for this product please contact:
T: 1 (888) 4PTGLAB (1-888-478-4522) (toll free in USA), or 1(312) 455-8498 (outside USA)
E: proteintech@ptglab.com
W: ptglab.com

This product is exclusively available under Proteintech Group brand and is not available to purchase from any other manufacturer.

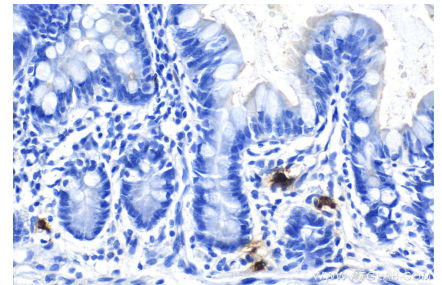
Selected Validation Data



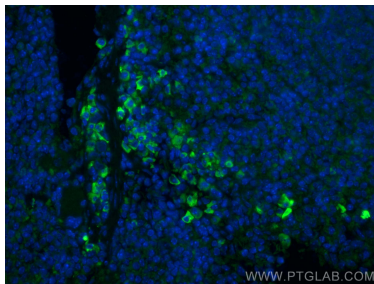
Human peripheral blood leukocyte cells were subjected to SDS PAGE followed by western blot with 67156-1-Ig (DEFA1 antibody) at dilution of 1:2500 incubated at room temperature for 1.5 hours.



Immunohistochemical analysis of paraffin-embedded human small intestine tissue slide using 67156-1-Ig (DEFA1 antibody) at dilution of 1:2000 (under 10x lens).



Immunohistochemical analysis of paraffin-embedded human small intestine tissue slide using 67156-1-Ig (DEFA1 antibody) at dilution of 1:2000 (under 40x lens).



Immunofluorescent analysis of (4% PFA) fixed paraffin-embedded mouse spleen tissue using DEFA1 antibody (67156-1-Ig, Clone: 1A2B3) at dilution of 1:400 and Coralite®488-Conjugated Goat Anti-Mouse IgG(H+L) (SA00013-1). Heat mediated antigen retrieval with Tris-EDTA buffer (pH 9.0).