

RASEF Monoclonal antibody

Catalog Number: 67159-1-Ig

Basic Information

Catalog Number: 67159-1-Ig	GenBank Accession Number: BC023566	Purification Method: Protein A purification
Size: 150ul, Concentration: 2000 ug/ml by Nanodrop and 1000 ug/ml by Bradford method using BSA as the standard;	GeneID (NCBI): 158158	CloneNo.: 1C2B2
Source: Mouse	UNIPROT ID: Q8IZ41	Recommended Dilutions: WB 1:1000-1:6000 IHC 1:500-1:2000 IF/ICC 1:200-1:800
Isotype: IgG2a	Full Name: RAS and EF-hand domain containing	
Immunogen Catalog Number: AG2149	Calculated MW: 740 aa, 83 kDa	
	Observed MW: 90 kDa	

Applications

Tested Applications:
WB, IHC, IF/ICC, ELISA

Species Specificity:
Human, mouse

Note-IHC: suggested antigen retrieval with **TE buffer pH 9.0; (*) Alternatively, antigen retrieval may be performed with citrate buffer pH 6.0**

Positive Controls:

WB : LNCaP cells,

IHC : human prostate cancer tissue, human ovary tumor tissue, human pancreas cancer tissue, mouse pancreas tissue

IF/ICC : A431 cells,

Background Information

The RASEF (RAS and EF-hand domain-containing protein), a member of Rab GTPase protein family, contains a Rab GTPase domain in the C-terminal region, a coiled coil motif in an internal region as well as 2 EF hand domains which were of importance for binding to calcium ions in the N-terminus.

Storage

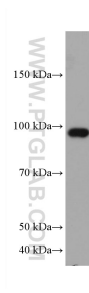
Storage:
Store at -20°C. Stable for one year after shipment.
Storage Buffer:
PBS with 0.02% sodium azide and 50% glycerol pH 7.3.
Aliquoting is unnecessary for -20°C storage

*** 20ul sizes contain 0.1% BSA

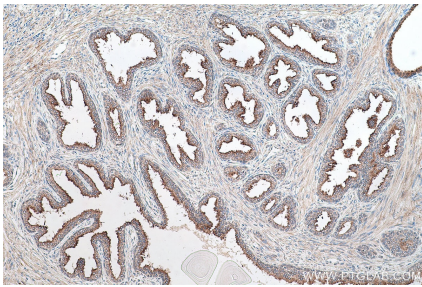
For technical support and original validation data for this product please contact:
T: 1 (888) 4PTGLAB (1-888-478-4522) (toll free in USA), or 1(312) 455-8498 (outside USA)
E: proteintech@ptglab.com
W: ptglab.com

This product is exclusively available under Proteintech Group brand and is not available to purchase from any other manufacturer.

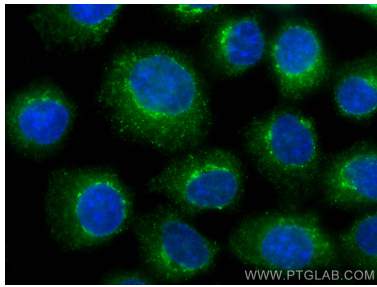
Selected Validation Data



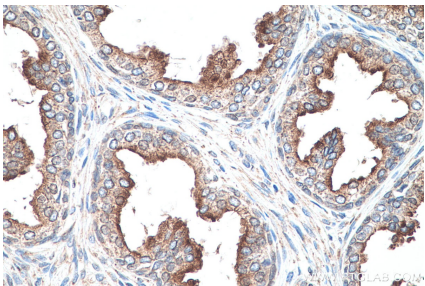
LNCaP cells were subjected to SDS PAGE followed by western blot with 67159-1-Ig (RASEF antibody) at dilution of 1:3000 incubated at room temperature for 1.5 hours.



Immunohistochemical analysis of paraffin-embedded human prostate cancer tissue slide using 67159-1-Ig (RASEF antibody) at dilution of 1:1000 (under 10x lens). Heat mediated antigen retrieval with Tris-EDTA buffer (pH 9.0).



Immunofluorescent analysis of (-20°C Methanol) fixed A431 cells using RASEF antibody (67159-1-Ig, Clone: 1C2B2) at dilution of 1:400 and CoraLite®488-Conjugated AffiniPure Goat Anti-Mouse IgG(H+L).



Immunohistochemical analysis of paraffin-embedded human prostate cancer tissue slide using 67159-1-Ig (RASEF antibody) at dilution of 1:1000 (under 40x lens). Heat mediated antigen retrieval with Tris-EDTA buffer (pH 9.0).