

For Research Use Only

HIP1 Monoclonal antibody, PBS Only

Catalog Number: 67163-1-PBS

Featured Product



Basic Information

Catalog Number:

67163-1-PBS

Size:

100ug, Concentration: 1 mg/ml by Nanodrop;

Source:

Mouse

Isotype:

IgG1

Immunogen Catalog Number:

AG17982

GenBank Accession Number:

BC110545

GeneID (NCBI):

3092

UNIPROT ID:

O00291

Full Name:

huntingtin interacting protein 1

Calculated MW:

1037 aa, 116 kDa

Observed MW:

110-120 kDa

Purification Method:

Protein G purification

CloneNo.:

3D3G3

Applications

Tested Applications:

WB, IF, IHC, Indirect ELISA

Species Specificity:

Human, mouse, pig

Background Information

HIP1 (huntingtin interacting protein-1) is a endocytic protein that plays a role in clathrin-mediated endocytosis and trafficking. HIP1 can interact with huntingtin (HTT) protein whose mutations cause Huntington's disease (HD), thus gets involved in neurodegeneration. By stabilizing receptor tyrosine kinases following ligand-induced endocytosis, HIP1 may act to promote cell survival. HIP1 is overexpressed in a variety of human cancers and may be a potential predictor for cancer progression and prognosis.

Storage

Storage:

Store at -80°C.

Storage Buffer:

PBS Only

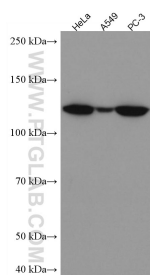
For technical support and original validation data for this product please contact:

T: 1 (888) 4PTGLAB (1-888-478-4522) (toll free in USA), or 1(312) 455-8498 (outside USA)

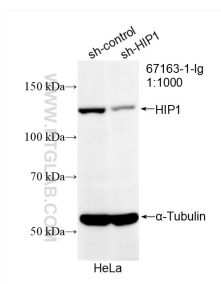
E: proteintech@ptglab.com
W: ptglab.com

This product is exclusively available under Proteintech Group brand and is not available to purchase from any other manufacturer.

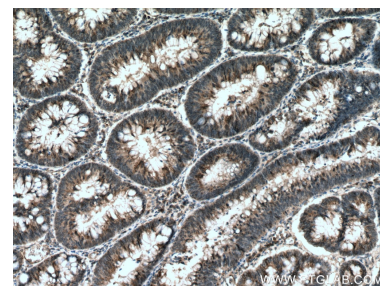
Selected Validation Data



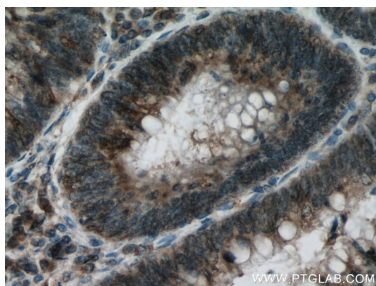
Various lysates were subjected to SDS PAGE followed by western blot with 67163-1-Ig (HIP1 antibody) at dilution of 1:3000 incubated at room temperature for 1.5 hours. This data was developed using the same antibody clone with 67163-1-PBS in a different storage buffer formulation.



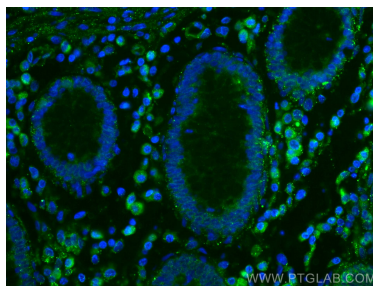
WB result of HIP1 antibody (67163-1-Ig; 1:1000; incubated at room temperature for 1.5 hours) with sh-Control and sh-HIP1 transfected HeLa cells. This data was developed using the same antibody clone with 67163-1-PBS in a different storage buffer formulation.



Immunohistochemical analysis of paraffin-embedded human colon cancer tissue slide using 67163-1-Ig (HIP1 antibody) at dilution of 1:300 (under 10x lens). Heat mediated antigen retrieval with Tris-EDTA buffer (pH 9.0). This data was developed using the same antibody clone with 67163-1-PBS in a different storage buffer formulation.



Immunohistochemical analysis of paraffin-embedded human colon cancer tissue slide using 67163-1-Ig (HIP1 antibody) at dilution of 1:300 (under 40x lens). Heat mediated antigen retrieval with Tris-EDTA buffer (pH 9.0). This data was developed using the same antibody clone with 67163-1-PBS in a different storage buffer formulation.



Immunofluorescent analysis of (4% PFA) fixed human colon cancer tissue using HIP1 antibody (67163-1-Ig, Clone: 3D3G3) at dilution of 1:400 and Coralite®488-Conjugated AffiniPure Goat Anti-Mouse IgG(H+L). This data was developed using the same antibody clone with 67163-1-PBS in a different storage buffer formulation.