

For Research Use Only

ACLY Monoclonal antibody

Catalog Number: 67166-1-Ig **9 Publications**



Basic Information

Catalog Number: 67166-1-Ig	GenBank Accession Number: BC006195	Purification Method: Protein A purification
Size: 150ul , Concentration: 1100 ug/ml by 47 Nanodrop and 1000 ug/ml by Bradford method using BSA as the standard;	GeneID (NCBI): UNIPROT ID: P53396	CloneNo.: 1E10D5
Source: Mouse	Full Name: ATP citrate lyase	Recommended Dilutions: WB 1:1000-1:10000 IHC 1:1000-1:4000 IF/ICC 1:400-1:1600
Isotype: IgM	Calculated MW: 121 kDa	
Immunogen Catalog Number: AG7709	Observed MW: 120 kDa	

Applications

Tested Applications: WB, IHC, IF/ICC, ELISA	Positive Controls: WB : Jurkat cells, MCF-7 cells, HSC-T6 cells IHC : human prostate cancer tissue, IF/ICC : A549 cells,
Cited Applications: WB, IF, IP	
Species Specificity: Human, Mouse, Rat	
Cited Species: human, mouse, rat	
Note-IHC: suggested antigen retrieval with TE buffer pH 9.0; (*) Alternatively, antigen retrieval may be performed with citrate buffer pH 6.0	

Background Information

ACLY(ATP-citrate synthase) is also named as ACL. It is the primary enzyme responsible for the synthesis of cytosolic acetyl-CoA. ACLY serves as not only a target in oxygenated cells for suppression of lipid synthesis and histone acetylation, but also as a susceptible target in hypoxic cells to restore inhibition of glycolysis. In nonsmall cell lung carcinoma and hepatocellular carcinoma, ACLY is overexpressed compared with normal parenchyma suggesting that ACLY may represent a common target among highly malignant tumors(PMID:19795461). This protein has 2 isoforms produced by alternative splicing.

Notable Publications

Author	Pubmed ID	Journal	Application
Yu Hu	34539243	Mediators Inflamm	WB
Feifei Zhou	36241648	Cell Death Dis	WB,IF,IP
Ruixin Wu	39798341	Phytomedicine	WB

Storage

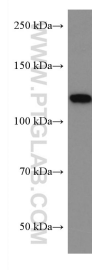
Storage:
Store at -20°C. Stable for one year after shipment.
Storage Buffer:
PBS with 0.02% sodium azide and 50% glycerol, pH7.3
Aliquoting is unnecessary for -20°C storage

*** 20ul sizes contain 0.1% BSA

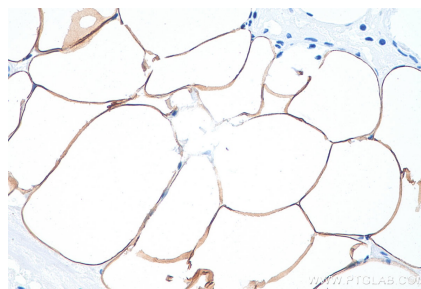
For technical support and original validation data for this product please contact:
T: 1 (888) 4PTGLAB (1-888-478-4522) (toll free in USA), or 1(312) 455-8498 (outside USA)
E: proteintech@ptglab.com
W: ptglab.com

This product is exclusively available under Proteintech Group brand and is not available to purchase from any other manufacturer.

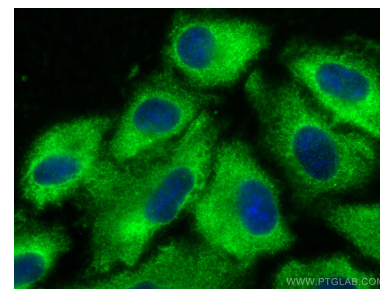
Selected Validation Data



Jurkat cells were subjected to SDS PAGE followed by western blot with 67166-1-Ig (ACLY antibody) at dilution of 1:10000 incubated at room temperature for 1.5 hours.



Immunohistochemical analysis of paraffin-embedded human prostate cancer tissue slide using 67166-1-Ig (ACLY antibody) at dilution of 1:2000 (under 40x lens). Heat mediated antigen retrieval with Tris-EDTA buffer (pH 9.0).



Immunofluorescent analysis of (-20°C Methanol) fixed A549 cells using ACLY antibody (67166-1-Ig, Clone: 1E10D5) at dilution of 1:800 and CoraLite®488-Conjugated Goat Anti-Mouse IgG(H+L).