

For Research Use Only

HUS1 Monoclonal antibody

Catalog Number: 67168-1-Ig



Basic Information

Catalog Number: 67168-1-Ig	GenBank Accession Number: BC007013	Purification Method: Protein G purification
Size: 150ul , Concentration: 2100 ug/ml by Nanodrop and 1000 ug/ml by Bradford method using BSA as the standard;	GeneID (NCBI): 3364	CloneNo.: 1E8E9
Source: Mouse	UNIPROT ID: O60921	Recommended Dilutions: WB 1:1000-1:6000 IHC 1:150-1:600
Isotype: IgG1	Full Name: HUS1 checkpoint homolog (S. pombe)	
Immunogen Catalog Number: AG28527	Calculated MW: 32 kDa	
	Observed MW: 32 kDa	

Applications

Tested Applications:
WB, IHC, ELISA

Species Specificity:
Human

Note-IHC: suggested antigen retrieval with **TE buffer pH 9.0; (*) Alternatively, antigen retrieval may be performed with citrate buffer pH 6.0**

Positive Controls:

WB : HeLa cells, HEK-293 cells, A549 cells, U2OS cells, Jurkat cells, K-562 cells

IHC : human prostate cancer tissue,

Background Information

Hus1 belongs to the Rad family, form a heterotrimeric clamp with Rad1 and Rad9 that acts as a putative sensor for DNA damage. This complex plays an apical role in the DNA damage response, loss of a functional complex affects many downstream checkpoint pathways [PMID: 11340080]. It is also a key complex involved in the activation of the ATR pathway. 9-1-1 forms a ring-shaped heterotrimer, resembling the homotrimeric sliding clamp, proliferating cell nuclear antigen (PCNA) [PMID: 19535328].

Storage

Storage:

Store at -20°C. Stable for one year after shipment.

Storage Buffer:

PBS with 0.02% sodium azide and 50% glycerol pH 7.3.

Aliquoting is unnecessary for -20°C storage

***** 20ul sizes contain 0.1% BSA**

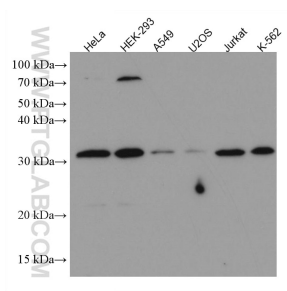
For technical support and original validation data for this product please contact:

T: 1 (888) 4PTGLAB (1-888-478-4522) (toll free in USA), or 1(312) 455-8498 (outside USA)

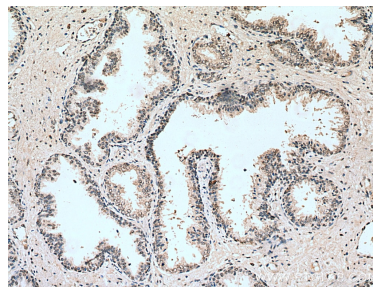
E: proteintech@ptglab.com
W: ptglab.com

This product is exclusively available under Proteintech Group brand and is not available to purchase from any other manufacturer.

Selected Validation Data



Various lysates were subjected to SDS PAGE followed by western blot with 67168-1-Ig (HUS1 antibody) at dilution of 1:3000 incubated at room temperature for 1.5 hours.



Immunohistochemical analysis of paraffin-embedded human prostate cancer tissue slide using 67168-1-Ig (HUS1 antibody) at dilution of 1:300 (under 10x lens). Heat mediated antigen retrieval with Tris-EDTA buffer (pH 9.0).